

GSL ENERGY

Much More Than Grade A



A Leader of Green Energy Provider in China

SHENZHEN GSL ENERGY CO.,LTD.

sales@gsl-energy.com

+86-755-84515360

www.gsl-energy.com

www.gslenergyusa.com

Building 1, Tian'an Cyble park, Longcheng Sub-District Office, Shenzhen, Guangdong, China

Building 2, No.58, Xinjian Road, Qiuchang Subdistrict, Huiyang District, Huizhou, Guangdong, China



Facebook



LinkedIn



Tiktok



Youtube



Video Site

GSL ENERGY

GREEN SOLUTIONS



www.gsl-energy.com

A modern, multi-story glass skyscraper with the 'GSL ENERGY' logo prominently displayed on its upper facade. The building is set against a clear blue sky with some light clouds. In the foreground, there are green trees and a street lamp.

Company Profile

GSL ENERGY is an unique company with vertical integration of all technologies needed for ESS (Energy Storage System) including cathode material, lithium cell, BMS and system integration.

With our proprietary breakthroughs and unwavering commitment to ESS applications, we've successfully commissioned over 5.8 GWh of products across 138+ countries by the conclusion of 2023. This accomplishment serves as a testament to our contribution to reshaping the dynamics of electricity generation, transmission, and utilization.

Our primary focus remains on the production of high-quality batteries, we adhere to grade A LiFePO4 cells sourced from the foremost cell producers in China, such as CATL and REPT. These cells, recognized for their excellence, have even found their way into Tesla's China factory and other globally renowned vehicle manufacturers

We've pursued the mission of "Bringing Green Power to the World" by delivering exceptional energy solutions and services. Customers are always our priority, we care about safety, quality and good service for our long-term business cooperation.

GSL ENERGY – A Leader of Green Energy Provider in China since 2011

Annual Production Capacity	5.8GWh	Annual Business Growth	200%
R&D Teams	100+	Projects Complete	120,000+
Countries Covered	138+	Global Customer	150,000+

R&D Capability

GSL Energy has achieved vertical integration through advanced global manufacturing facilities that incorporate innovative technology. This integration enables us to manufacture top-notch lithium battery cells, modules, and packs of exceptional quality, tailored to fulfill the diverse demands of global markets.

Concurrently, our engineering team possesses an extensive wealth of knowledge and years of experience, enabling us to swiftly conceptualize and create novel battery solutions. This proficiency aids our clients in promptly introducing their inventive products to the market.



Manufacturing Capability

In pursuit of establishing a comprehensive industrial technology system, GSL Energy has established laboratories dedicated to conducting safety and reliability assessments. These tests encompass physical and chemical examinations as well as evaluations of electrical performance.

We specialize in the development and production of cutting-edge lithium battery systems, assisting our clients in swiftly realizing engineering advancements from initial concepts to successful commercialization.



Company Certifications

GSL boasts a dedicated research and development unit guided by seasoned professionals, entrusted with the autonomous creation of power and energy storage battery products under "GSL ENERGY" brand. Our adherence to **ISO9001:2015** quality management standards is a testament to our commitment.

Our products have successfully cleared international certifications.

Notably, our 5.12kWh, 10.12kWh, and 14.34kWh wall-mounted batteries earned certifications from **UL1973**, **UL9540**, and **IEC62619**. These models have also been included in the roster of **CEC** (California Energy Commission) listings.



Main Products

48/51.2V LiFePO4 Battery



Power Storage Wall

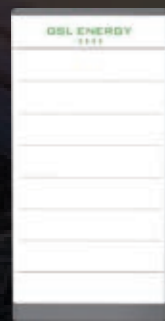
01-10.



Rack Mounting Battery

11-16.

HV Battery Cluster



Residential HV Batteries

17-20.



Commercial Battery Storage System

21-30.



All-In-One Series



AIO Residential ESS

31-38.



Commercial & Industrial ESS

39-42.



Control System



Low Voltage



High Voltage

Hybrid Inverter

43-54.



PCS

55-56.

EV-Charger

57-60.

Compatible List of Inverter Brands

63-64.

Power Station

61-62.

Case Studies

65.

Power Storage Wall

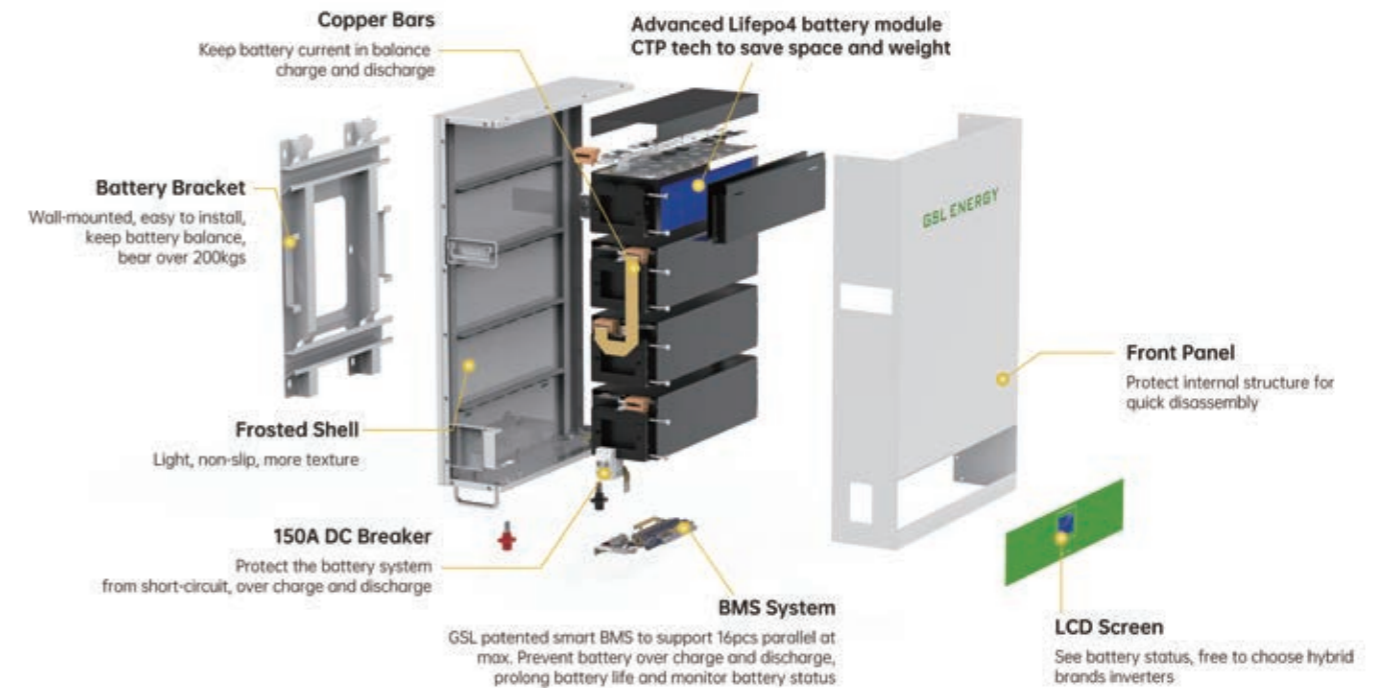
IEC62619, CE

6500+ life cycles



5.12kWh/10.24kWh/14.34kWh

- ★ Voltage and Temperature observation (IEC62619 certified)
- ★ Reduce electric bill and maximize your solar investment with battery storage
- ★ Data communication with popular hybrid inverters
- ★ Market Leading BMS Battery to Maximize Reliability and Longevity



Battery Specifications

Model No	GSL-051100A-B-GBP2	GSL-051200A-B-GBP2	GSL-051280A-B-GBP2
Battery Chemistry	LiFePO4 Battery		
Rated Voltage	51.2V		
Capacity	100AH	200AH	280AH
Energy	5.12kWh	10.24kWh	14.34kWh
Max. charge Voltage	56Vdc		
Max. discharge Voltage	46Vdc		
Max. charge Current	100A	150A	150A
Max. discharge Current	100A	150A	150A
Dimension (W*H*D)	650*436*160mm / 25.6*17.2*6.3 in	780*550*160mm / 30.7*21.6*6.3 in	900*675*200mm / 35.4*26.6*7.9 in
Gross weight	45kgs / 99 lbs	84.5kgs / 186 lbs	142.5kgs / 314 lbs
Cycle Life (25±2°C,0.5C/0.5C,80%DoD)	6500		8500
Certification	CB IEC62619, CE-EMC, MSDS, UN38.3		

Power Storage Wall

UL9540A, UL9540, UL1973, CEC

6500~8500+ life cycles

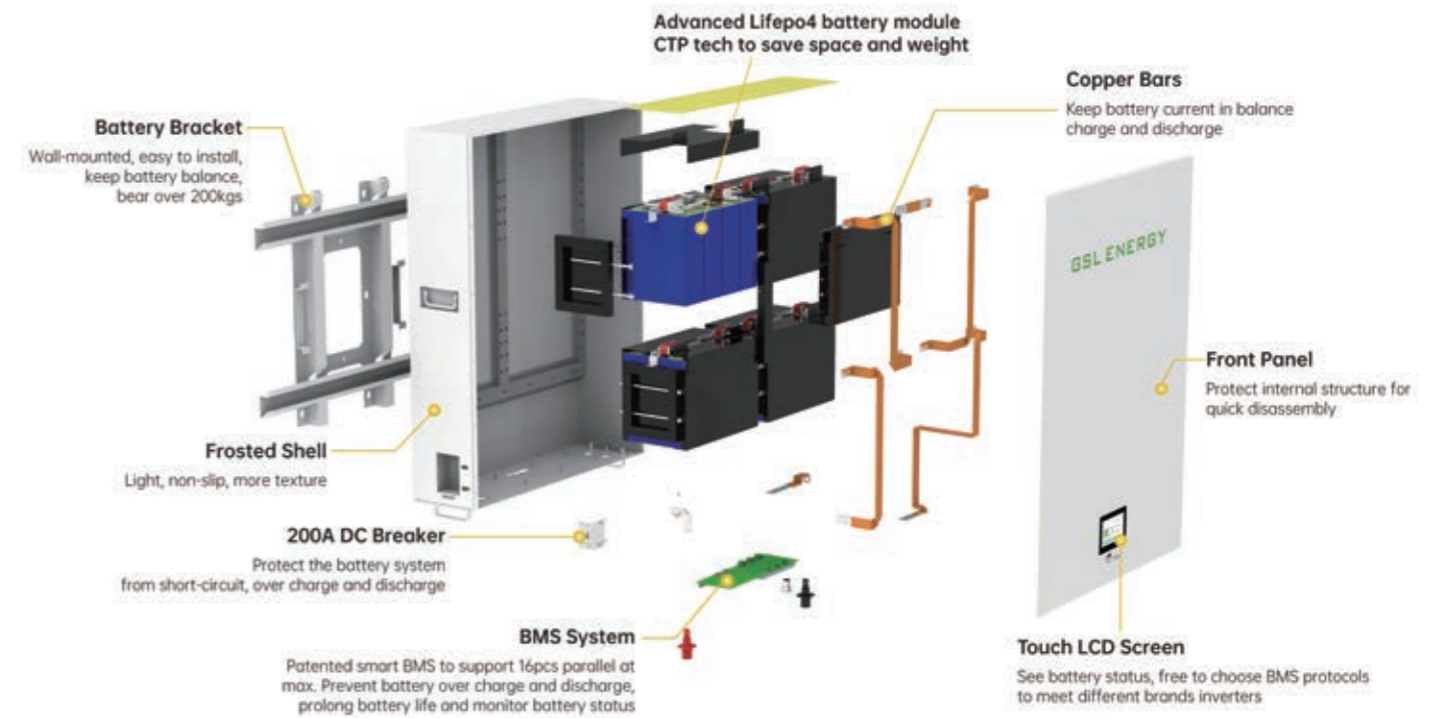
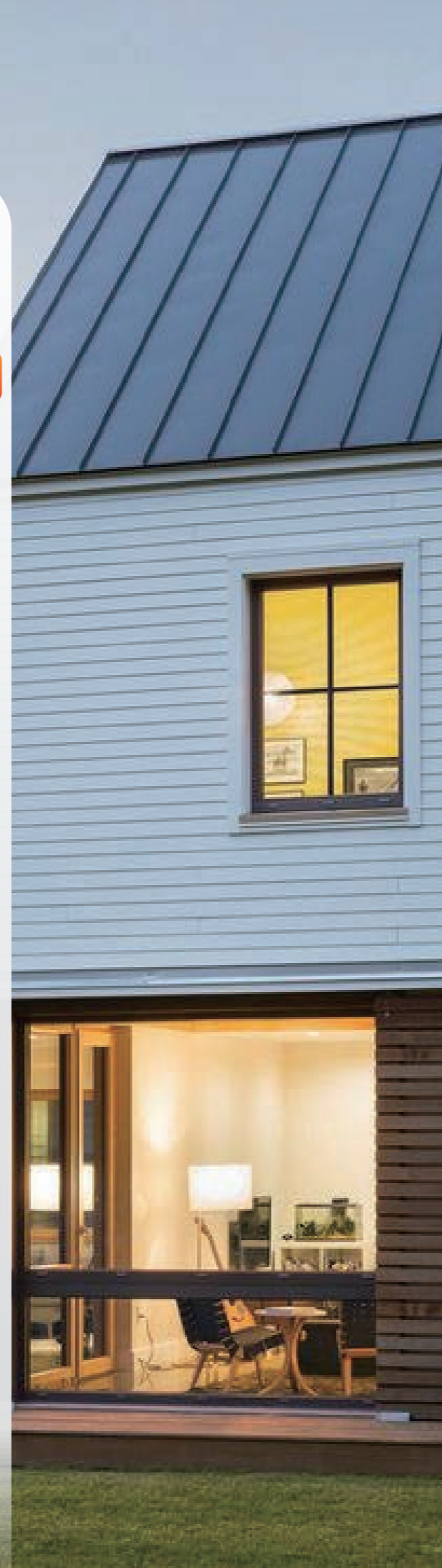
With Lux Power, Sol-Ark, MEGAREVO, etc



5.12kWh

10.24/14.34kWh

- ★ Voltage and Temperature observation (UL9540 & UL1973 certified)
- ★ Reduce electric bill and maximize your solar investment with battery storage
- ★ Data communication with popular hybrid inverters
- ★ GSL patented UL approved BMS to maximize



Battery Specifications

Model No	GSL-051100A-B-GBP2	GSL-051200A-B-GBP2	GSL-051280A-B-GBP2
Battery Chemistry	LiFePO4 Battery		
Rated Voltage	51.2V		
Capacity	100AH	200AH	280AH
Energy	5.12KWh	10.24KWh	14.34KWh
Max. charge Voltage	56Vdc		
Max. discharge Voltage	46Vdc		
Max. charge Current	100A	100A	150A
Max. discharge Current	100A	100A	150A
Dimension (W*H*D)	615*480*160mm / 24.2*18.9*6.3 in	720*550*200mm / 28.3*21.6*7.8 in	900*675*200mm / 35.4*26.6*7.9 in
Gross weight	53.5kgs / 117 lbs	103kgs / 227 lbs	132kgs / 291 lbs
Cycle Life (25±2°C,0.5C/0.5C,80%DoD)	6500		8500
Certification	UL 9540A, UL 1973, CE-EMC, CB IEC62619, MSDS, UN38.3		

Power Storage Wall

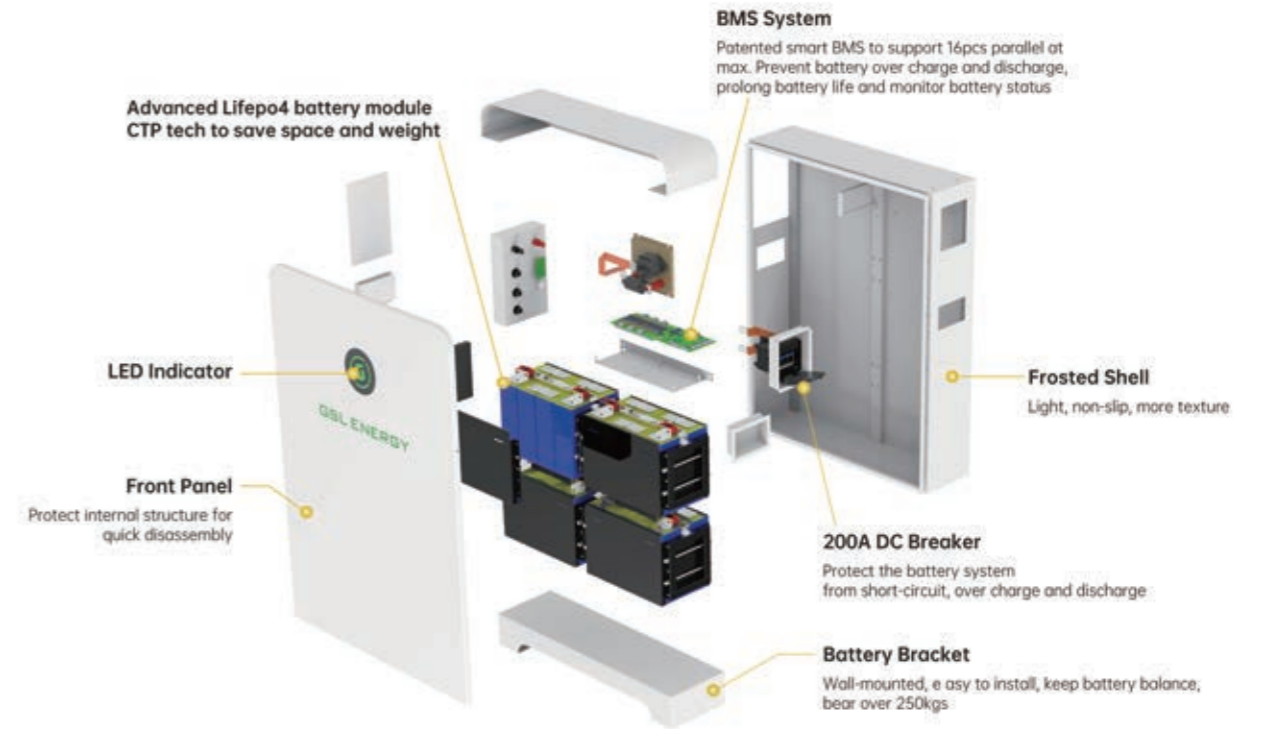
UL9540A, UL1973, CEC

10000+ life cycles



14.34/ 16.08kWh

- ★ IP65 Waterproof Indoor and Outdoor installation
- ★ Voltage and Temperature observation (IEC62619 certified)
- ★ Reduce electric bill and maximize your solar investment with battery storage
- ★ Data communication with popular hybrid inverters
- ★ Market leading BMS battery to maximize reliability and longevity



Battery Specifications

	GSL-051280A-B-GBP2	GSL-051314A-B-GBP2
Model No	GSL-051280A-B-GBP2	GSL-051314A-B-GBP2
Battery Chemistry	LiFePO4 Battery	
Rated Voltage	51.2V	
Capacity	280AH	314AH
Energy	14.34kWh	16.08kWh
Max. charge Voltage	56Vdc	
Max. discharge Voltage	46Vdc	
Max. charge Current	150A	
Max. discharge Current	150A	
Dimension (W*H*D)	700*1050*200mm / 27.6*41.3*7.9 in	
Gross weight	128.5kgs / 283 lbs	145.5kgs / 320 lbs
Cycle Life (25±2°C,0.5C/0.5C,80%DoD)	10000	
Certification	UL9540A, UL1973, CB-IEC62619, CE-EMC, UN38.3, MSDS	

Power Storage Brick

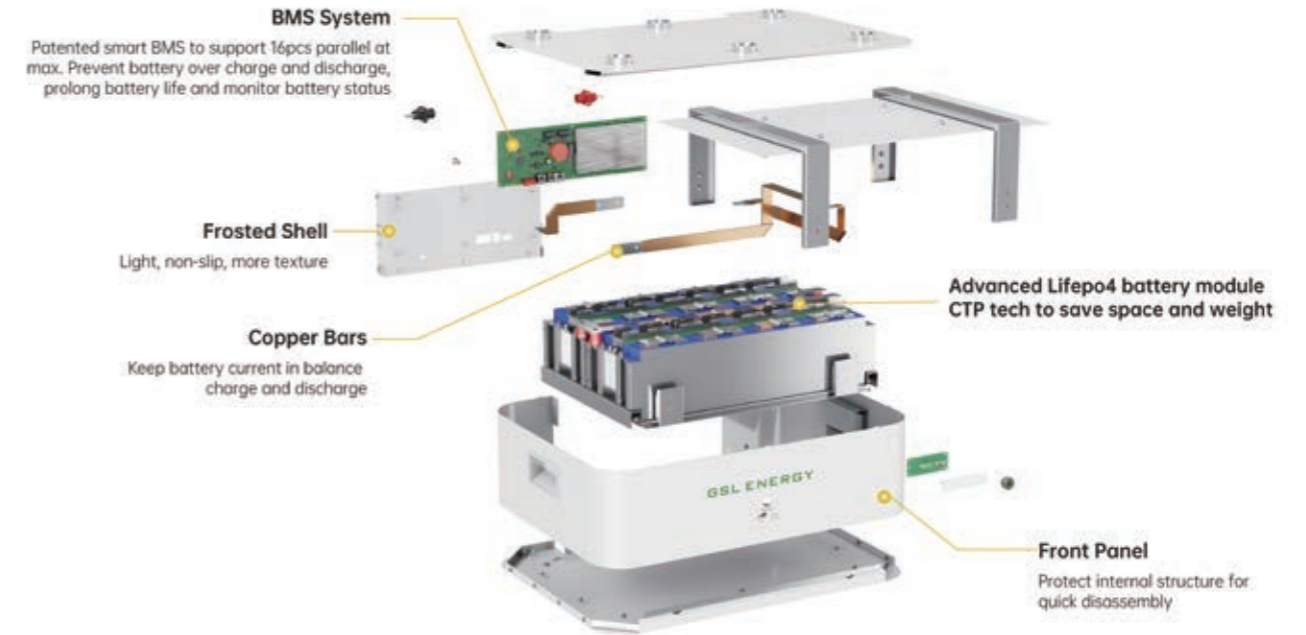
IEC62619, CE

6500+ life cycles



5.12/10.24kWh

- ★ Smart App with Bluetooth Function
- ★ GSL self developed BMS, 10 years tested
- ★ Scalable up to 163Kwh in parallel
- ★ Compatible with most leading inverters



Battery Specifications		
Model No	GSL-5000U-5KWH	GSL-10000U-10KWH
Battery Chemistry	LiFePO4 Battery	
Rated Voltage	51.2V	
Capacity	100AH	200AH
Energy	5.12kWh	10.24kWh
Max. charge Voltage	56Vdc	
Max. discharge Voltage	46Vdc	
Max. charge Current	100A	100A
Max. discharge Current	100A	150A
Dimension (W*H*D)	590*435*165mm / 23.2*17.1*6.5 in	720*600*200mm / 28.3*23.6*7.9 in
Weight Approximate	65kgs / 143 lbs	100.5kgs / 221 lbs
Cycle Life (25±2°C,0.5C/0.5C,80%EOL)	6500	
Certification	CB IEC62619, CE, MSDS, UN38.3	

Power Tower

IEC62619, CE

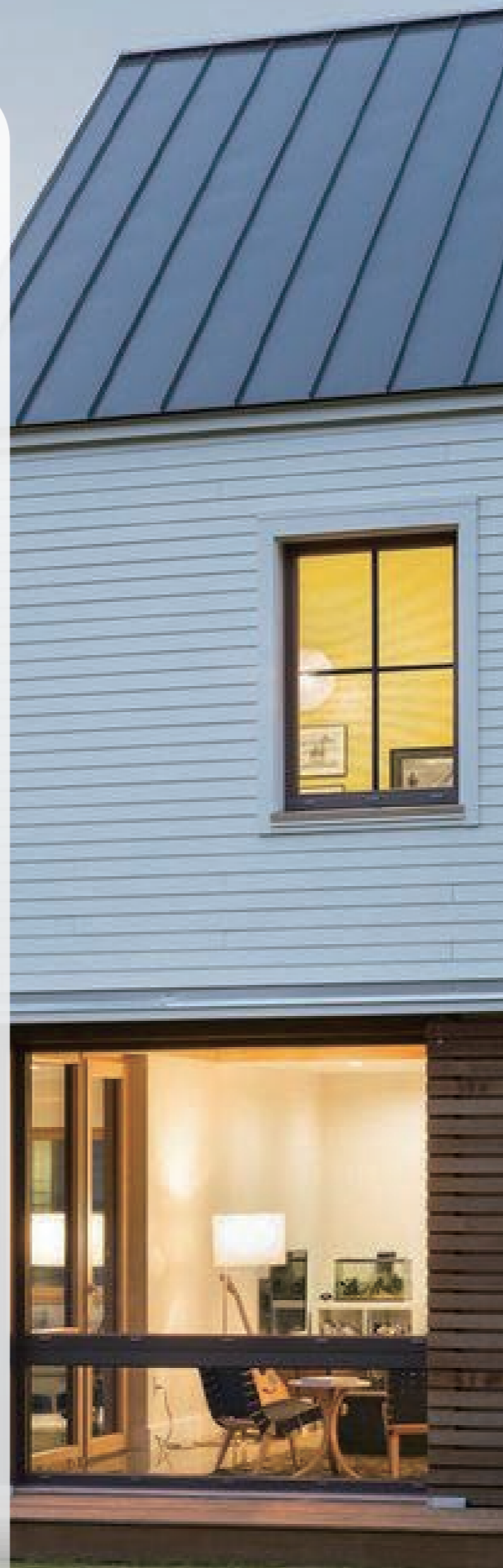
6500+ life cycles

Wi-Fi Connection
Built-in DC Breaker



16.08/20.48kWh

- ★ Smart App with Bluetooth Function
- ★ GSL self developed BMS, 10 years tested
- ★ Scalable up to 300kWh in parallel
- ★ Compatible with most leading inverters
- ★ IP20 /IP65 waterproof rating



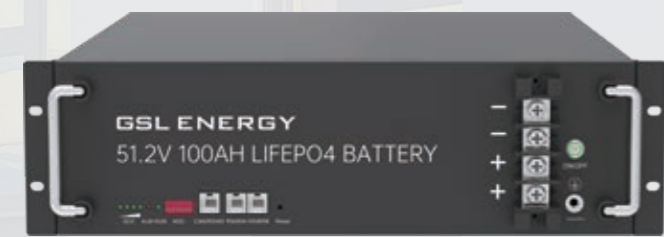
Battery Specifications

Model No	GSL-W-16K	GSL-W-20K
Battery Chemistry	LiFePO4 Battery	
Rated Voltage	51.2V	
Capacity	314AH	400AH
Energy	16.08kWh	20.48kWh
Max. charge Voltage	56Vdc	
Max. discharge Voltage	46Vdc	
Max. charge Current	150A	150A
Max. discharge Current	150A	150A
Dimension (W*H*D)	522.6*1007*343mm / 20.6*39.6*13.5 in	650*1005*400mm / 25.9*39.6*15.7 in
Weight Approximate	135kgs / 298 lbs	210.5kgs / 464 lbs
Cycle Life (25±2°C,0.5C/0.5C,80%EOL)	6500	
Certification	CB IEC62619, CE, MSDS, UN38.3	

Rack Mounting Battery

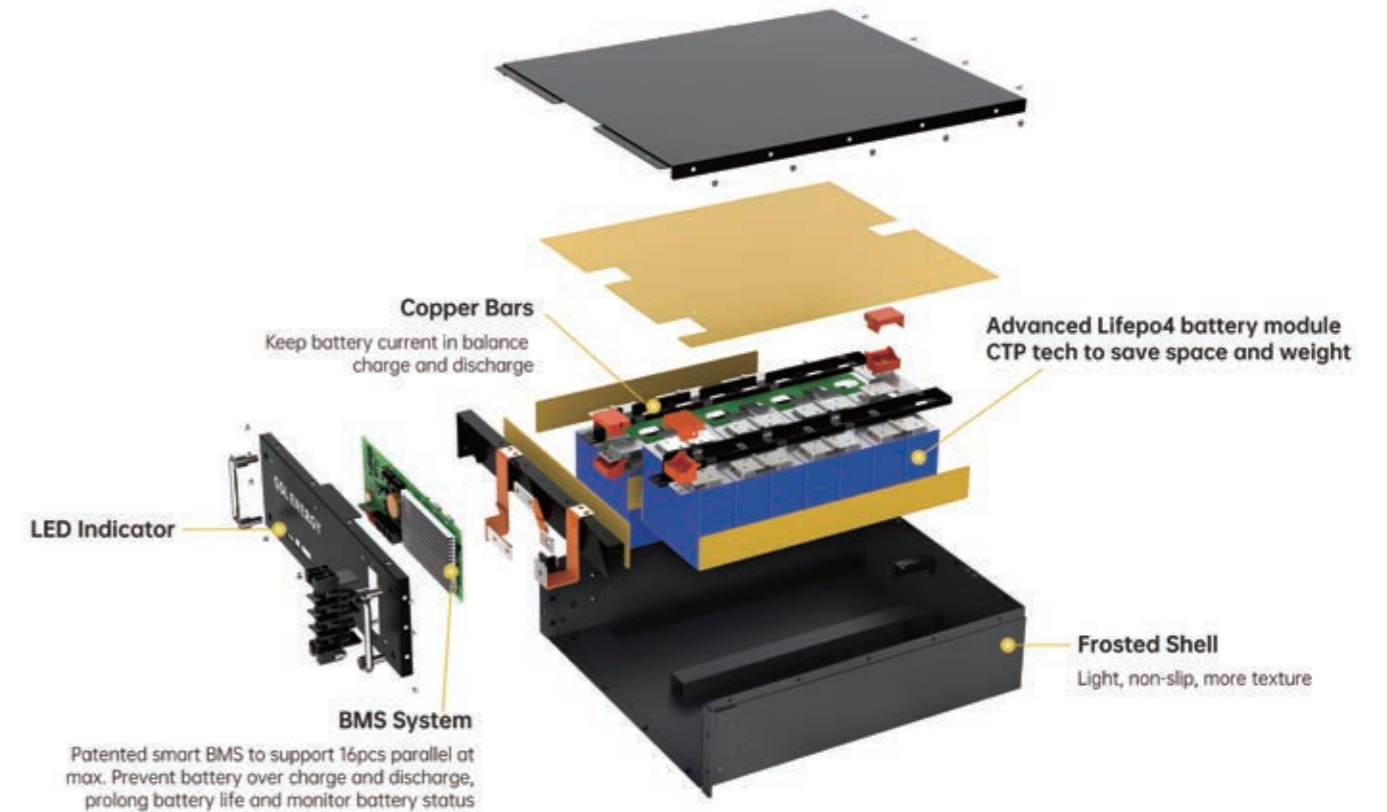
IEC62619, CE

6500+ life cycles



48V 100Ah

- ★ Voltage and Temperature observation (IEC62619 certified)
- ★ Each module is equipped with an independent BMS system
- ★ Modular design for flexible configuration
- ★ The design of battery management system provides the highest reliability
- ★ Data communication with popular hybrid inverters



Battery Specifications

Model No	ZN-P48100ESA1
Battery Cell	REPT Cell
Rated Voltage	48V
Capacity	100AH
Energy	4.8kWh
Max. charge Voltage	54Vdc
Max. discharge Voltage	45Vdc
Max. charge Current	100A
Max. discharge Current	100A
Dimension (W*H*D)	482*520*132.5mm / 18.9*20.4*5.2 in
Weight Approximate	40kgs / 88 lbs
Cycle Life (25±2°C,0.5C/0.5C,80%EOL)	6500
Certification	CB IEC62619, CE-EMC, MSDS, UN38.3

Rack Mounting Battery

IEC62619, CE

6000+ life cycles



51.2V 100Ah-3U

- ★ Voltage and Temperature observation (IEC62619 certified)
- ★ Support Wallmounted, Ground, and Stackable installation
- ★ Each module is equipped with an independent BMS system
- ★ The design of battery management system provides the highest reliability
- ★ Data communication with popular hybrid inverters



Ground



Stackable



Wallmount

Battery Specifications

Model No	GSL-A51100
Battery Cell	REPT Cell
Rated Voltage	51.2V
Capacity	100AH
Energy	5.12KWh
Max. charge Voltage	56Vdc
Max. discharge Voltage	46Vdc
Max. charge Current	100A
Max. discharge Current	100A
Dimension (W*H*D)	420*550*132.5mm / 16.6*21.7*5.2 in
Gross weight	45kgs / 99 lbs
Cycle Life (25±2°C,0.5C/0.5C,80%DoD)	6500
Certification	CB IEC62619, CE-EMC, MSDS, UN38.3

Rack Mounting Battery

IEC62619, CE

6500+ life cycles

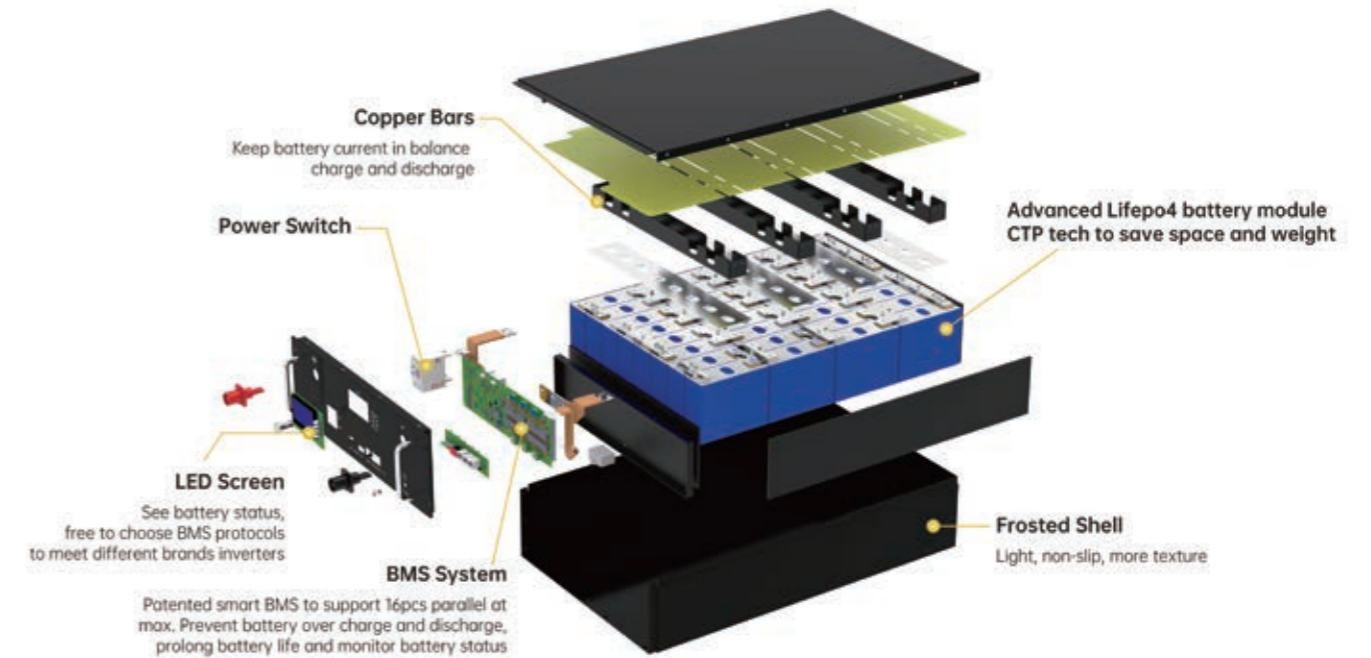
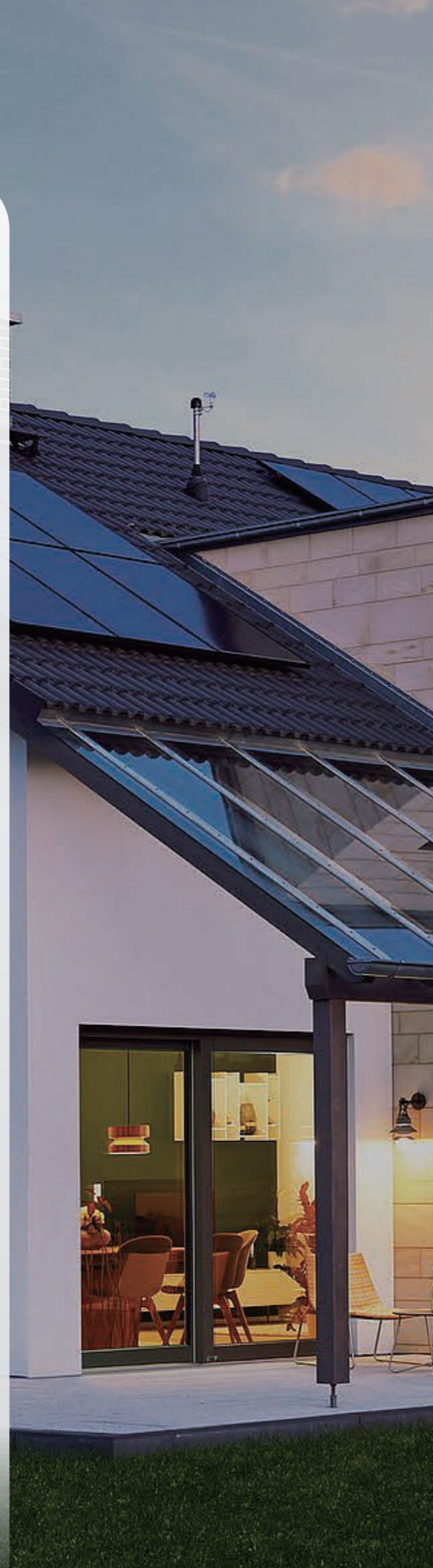


51.2V 100/200Ah-3.5U



51.2V 280Ah-5U

- ★ Voltage and Temperature observation (IEC62619 certified)
- ★ Each module is equipped with an independent BMS system
- ★ Modular design for flexible configuration
- ★ The design of battery management system provides the highest reliability
- ★ Data communication with popular hybrid inverters



Battery Specifications

Model No	GSL-51-100	GSL-51-200	GSL-51-280
Battery Cell	REPT Cell		
Rated Voltage	51.2V		
Capacity	100AH	200AH	280AH
Energy	5.12KWh	10.24KWh	14.34KWh
Max. charge Voltage	56Vdc		
Max. discharge Voltage	46Vdc		
Max. charge Current	100A	150A	150A
Max. discharge Current	100A	150A	150A
Dimension (W*H*D)	482.6*420*155mm / 19.0*16.5*6.1 in	482.6*720*155mm / 19.0*28.3*6.1 in	482.6*800*221.5mm / 19.0*31.5*8.7 in
Gross weight	43.5kgs / 96 lbs	89.5kgs / 197 lbs	125kgs / 276 lbs
Cycle Life (25±2°C, 0.5C/0.5C, 80%DoD)	6500		
Certification	CB IEC62619, CE-EMC, MSDS, UN38.3		

Residential HV Batteries

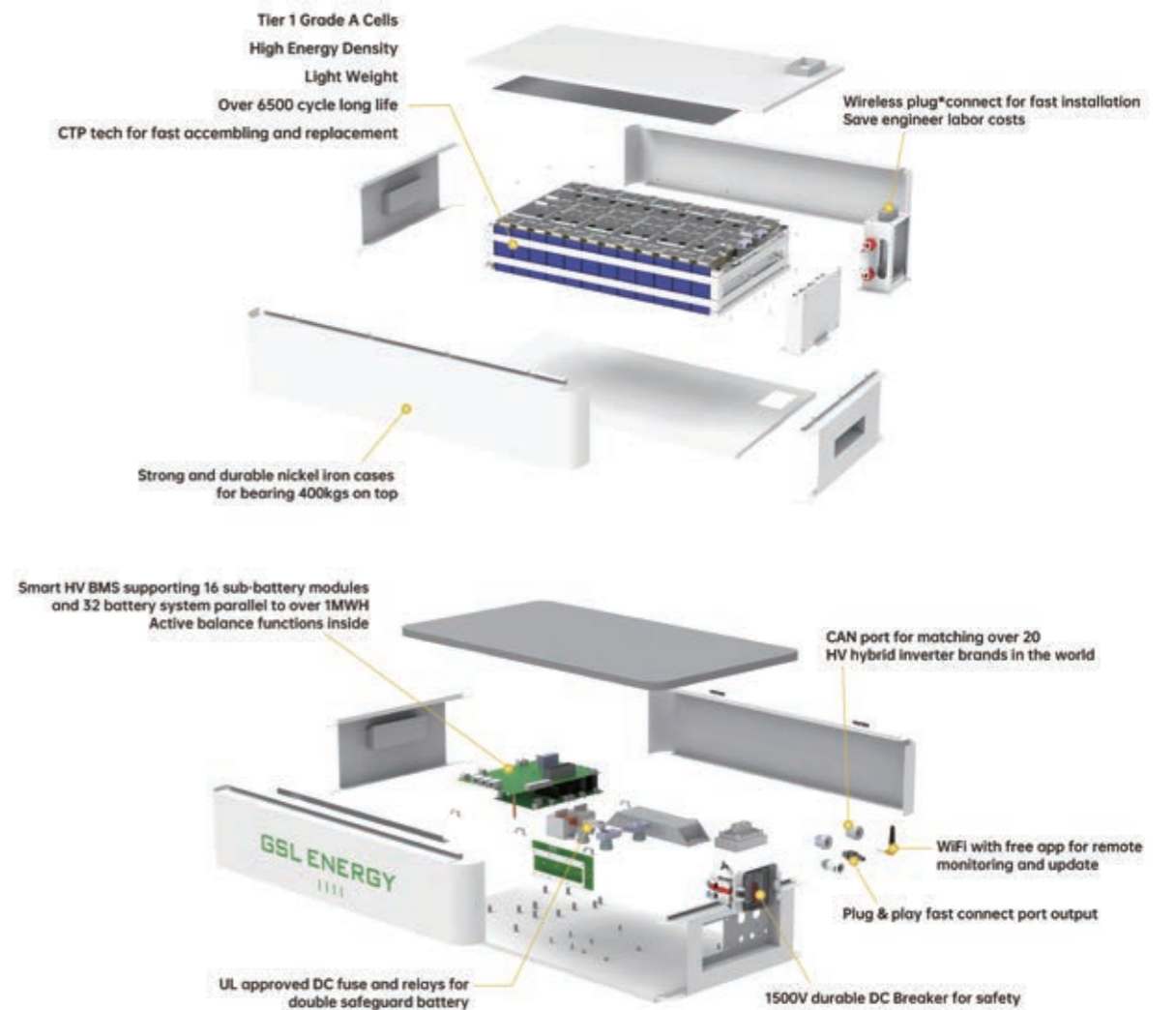
IEC62619, CE

6500+ life cycles



G3/ G4/ G5/ G6/ G7/ G8

- ★ Modular structure for easy installation
- ★ GSL self developed BMS, 10 years tested
- ★ Scalable up to 122.88Kwh in parallel
- ★ Compatible with most leading inverters



Battery Specifications

Model No	G3	G4	G5	G6	G7	G8
Nominal Capacity	11.52kWh	15.36kWh	19.20kWh	23.04kWh	26.88kWh	30.72kWh
Cell Matching	72S1P	96S1P	120S1P	144S1P	168S1P	192S1P
Nominal Voltage	230.4V	304.2V	384V	460.8V	537.6V	614.4V
Working Voltage Range	198 ~ 259.2V	264 ~ 345.6V	330 ~ 432V	396 ~ 518.4V	462 ~ 604.8V	528 ~ 691.2V
Weight	157.5kgs / 347 lbs	198.5kgs / 437 lbs	242.5kgs / 535 lbs	285kgs / 628 lbs	327.5kgs / 722 lbs	370kgs / 816 lbs
Dimension (W*D*H)	680*378* 660mm / 26.8*14.9* 26.0 in	680*378* 800mm/ 26.8*14.9* 31.5 in	680*378* 940mm / 26.8*14.9* 37 in	680*378* 1080mm / 26.8*14.9* 42.5 in	680*378* 1220mm / 26.8*14.9* 48.0 in	680*378* 1360mm / 26.8*14.9* 53.5 in
Battery Type	LiFePO4 Battery					
Nominal Working Current	25A					
Communication Port	CAN/TCP/IP					
Working Temperature Range	Charge:0-55°C/Discharge:-20-60°C					
Waterproof	IP20					
Installation Method	Floor-standing					
Cycle Life	6500					
Peak Charge/Discharge Current (@25°C,5S)	50A					
Discharge Rate of Module	< 3.5%/month/@25°C					
Module Series Connection /Module	3S~8S					
Parallel Connection	5 units in parallel					

Residential HV Batteries

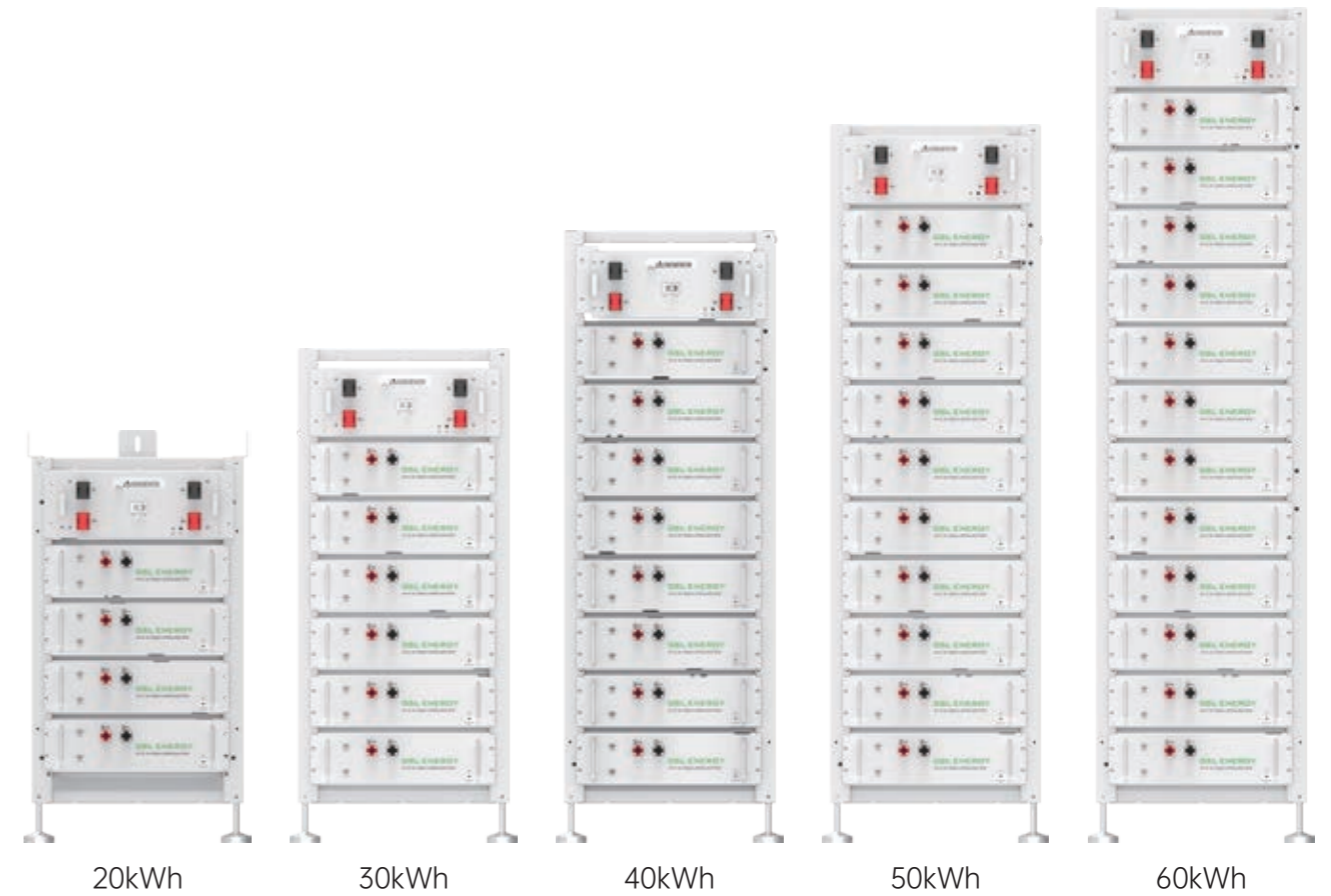
IEC62619, CE

6500+ life cycles



GSL-HV51100 5.12KWH Module

- ★ Standardized design, high degree of modularity
- ★ GSL self developed BMS, 10 years tested
- ★ Adopts high-performance PCS to ensure high safety and stability
- ★ Built-in BMS to ensure high safety
- ★ Compatible with most leading inverters



Battery Specifications					
Model No	R20K	R30K	R40K	R50K	R60K
Nominal Capacity	20.48kWh	30.72kWh	40.96kWh	51.2kWh	61.44kWh
Cell Matching	64S1P	96S1P	128S1P	160S1P	192S1P
Nominal Voltage	204.8V	307.2V	409.6V	512V	512V
Working Voltage Range	176 ~ 233.6V	264 ~ 350V	352 ~ 467.2V	440 ~ 584V	537.6 ~ 691.2V
Weight	201.4kgs / 444 lbs	309.6kgs / 683 lbs	492.8kgs / 1086 lbs	499kgs / 1100 lbs	582.2kgs / 1284 lbs
Dimension (W*D*H)	553*503*1011mm / 21.8*19.8*39.8 in	553*503*1620mm / 21.8*19.8*63.8 in	553*503*1620mm / 21.8*19.8*63.8 in	553*503*2230mm / 21.8*19.8*87.6 in	553*503*2230mm / 21.8*19.8*87.8 in
Battery Type	LiFePO4 Battery				
Nominal Working Current	100A				
Communication Port	CAN/TCP/IP				
Working Temperature Range	Charge:0-55°C/Discharge:-20-55°C				
Waterproof	IP20				
Installation Method	Floor-standing				
Cycle Life	6500				
Peak Charge/Discharge Current (@25°C,5S)	150A				
Discharge Rate of Module	< 3.5%/month/@25°C				

Commercial Battery Storage System

IEC62619, CE

6500+ life cycles



GSL-HV51200 10.24KWH Module

- ★ Standardized design, high degree of modularity
- ★ GSL self developed BMS, 10 years tested
- ★ Adopts high-performance PCS to ensure high safety and stability
- ★ Built-in BMS to ensure high safety
- ★ Compatible with most leading inverters



80kWh

100kWh

120kWh

130kWh

Battery Specifications

Model No	R80K	R100K	R120K	R130K
Nominal Capacity	81.92kWh	102.4kWh	122.88kWh	133.12kWh
Cell Matching	128S1P	160S1P	192S1P	208S1P
Nominal Voltage	409.6V	512V	614.4V	665.6V
Working Voltage Range	176 ~ 233.6V	264 ~ 350V	440 ~ 584V	598 ~ 728V
Weight	969.6kgs / 2138 lbs	1172kgs / 2584 lbs	1294.4kgs / 2854 lbs	1456.8kgs / 3212 lbs
Dimension (W*D*H)	1700*1200*1700mm / 66.9*47.2*66.9 in			
Battery Type	LiFePO4 Battery			
Nominal Working Current	100A			
Communication Port	CAN/TCP/IP			
Working Temperature Range	Charge:0-55°C/Discharge:-20-55°C			
Waterproof	IP20			
Installation Method	Floor-standing			
Cycle Life	6500			
Peak Charge/Discharge Current (@25°C,5S)	200A			
Discharge Rate of Module	≤ 3.5%/month/@25°C			

Commercial Battery Storage System

IEC62619, CE

8500+ life cycles



GSL-HV51280 14.34KWH Module

- ★ Standardized design, high degree of modularity
- ★ GSL self developed BMS, 10 years tested
- ★ Adopts high-performance PCS to ensure high safety and stability
- ★ Built-in BMS to ensure high safety
- ★ Compatible with most leading inverters



110kWh

140kWh

170kWh

180kWh

Battery Specifications

Model No	R110K	R140K	R170K	R180K
Nominal Capacity	114.72kWh	143.4kWh	172.08kWh	186.42kWh
Cell Matching	128S1P	160S1P	192S1P	208S1P
Nominal Voltage	409.6V	512V	614.4V	665.6V
Working Voltage Range	358.4 ~ 460.8V	448 ~ 576V	537.6 ~ 691.2V	598 ~ 728V
Weight	1165kgs / 2568 lbs	1370kgs / 3020 lbs	1624.5kgs / 3581 lbs	1844.5kgs / 4066 lbs
Dimension (W*D*H)	1200*1000*2200mm / 47.2*39.4*81.4 in			
Battery Type	LiFePO4 Battery			
Nominal Working Current	150A			
Communication Port	CAN/TCP/IP			
Working Temperature Range	Charge:0-55°C/Discharge:-20-55°C			
Waterproof	IP20			
Installation Method	Floor-standing			
Cycle Life	8500			
Peak Charge/Discharge Current (@25°C,5S)	200A			
Discharge Rate of Module	< 3.5%/month/@25°C			

Commercial Battery Storage System

UL9540A, UL1973, IEC

8500+ life cycles



372kWh Liquid-Cooling Battery

- ★ Standardized design, high degree of modularity
- ★ Internal air conditioning independent temperature control
- ★ Adopts high-performance PCS to ensure high safety and stability
- ★ Adopts high-quality IP54 outdoor cabinet
- ★ GSL self developed BMS, 10 years tested



232-1000VDC



372-1500VDC

Battery Specifications

Model No	GSL-BESS-232K	GSL-BESS-372K
Single Cell Type	LFP 3.2V/280AH	
Module Combination	1P52S	
System Combination	5 modules in series	8 modules in series
Capacity (kWh)	232.96	372.7
Nominal Voltage (Vdc)	832	1331.2
Voltage Range (Vdc)	728 ~ 949	1164.8 ~ 1497.6
Charge/Discharge Current	0.8C	
Discharge Depth	90% DoD	
Service Life	>8500 cycles@80%DoD	
Thermal Management Mode	Liquid cooling technology	
Thermal Runaway Management-1	Aerosol Extinguishing or PFH	
Thermal Runaway Management-2	Water Immersion	
Dimensions (W*D*H)	1300*1300*2340mm / 51.2*51.2*92.1 in	
Total Weight	3500kgs / 7716 lbs	
Operation Altitude	3000m(>3000m derating)	
Noise Level @1m	<75 dB(A)	
IP Rating	P55	
Operating Temperature	-20°C to 55°C	
Operating Humidity (RH)	0 to 95%	
Storage Conditions	-20°C to 30°C, Up to 95% RH, non-condensing State of Energy (SoE): 50% initial	
Communication Interface	CAN, RS485, Wi-Fi	
Certifications	UL1973, UL1642, UL9540A, IEC62477-1, IEC62619, IEC63050, IEC61000-6-2/4, UN38.3, UN3536	

Commercial Battery Storage System

8500+ life cycles



3.72MWh Conversion System

- ★ Standardized design, high degree of modularity
- ★ Internal air conditioning independent temperature control
- ★ Adopts high-performance PCS to ensure high safety and stability
- ★ Adopts high-quality IP55 outdoor cabinet
- ★ GSL self developed BMS, 10 years tested



Battery Specifications

Model No	GSL-BESS-3.72MWH
Single Cell Type	LFP 3.2V/280AH
Module Combination	10*1P416S
Number of Battery Clusters	10
Capacity (kWh)	3727
Nominal Voltage (Vdc)	1331.2
Voltage Range (Vdc)	1164.8 ~ 1497.6
Charge/Discharge Current	0.8C
Discharge Depth	90% DoD
Service Life	>8500 cycles@80%DoD
Thermal Management Mode	Liquid cooling technology
Thermal Runaway Management-1	Aerosol Extinguishing or PFH
Thermal Runaway Management-2	Water Immersion
Dimensions (W*D*H)	6058*2438*2896mm / 239*95.9*114.0 in
Total Weight	~40t / ~88185 lbs
Operation Altitude	3000m(>3000m derating)
Noise Level @1m	<75 dB(A)
IP Rating	IP55
Operating Temperature	-20°C to 55°C
Operating Humidity (RH)	0 to 95%
Storage Conditions	-20°C to 30°C, Up to 95% RH, non-condensing State of Energy (SoE): 50% initial
Communication Interface	CAN, RS485, Wi-Fi
Certifications	IEC62477-1, IEC61000-6/2/4, UN3536

Commercial Battery Storage System

8500+ life cycles



5MWh Conversion System

- ★ Standardized design, high degree of modularity
- ★ Internal air conditioning independent temperature control
- ★ Adopts high-performance PCS to ensure high safety and stability
- ★ Adopts high-quality IP55 outdoor cabinet
- ★ GSL self developed BMS, 10 years tested



Battery Specifications





Model No	GSL-BESS-5MWH
Single Cell Type	LFP 3.2V/280AH
Module Combination	14*1P416S
Number of Battery Clusters	14
Capacity (kWh)	5217.8
Nominal Voltage (Vdc)	1331.2
Voltage Range (Vdc)	1164.8 ~ 1497.6
Charge/Discharge Current	0.8C
Discharge Depth	90% DoD
Service Life	>8500 cycles@80%DoD
Thermal Management Mode	Liquid cooling technology
Thermal Runaway Management-1	Aerosol Extinguishing or PFH
Thermal Runaway Management-2	Water Immersion
Dimensions (W*D*H)	8200*2438*2896mm / 322.8*95.9*114.0 in
Total Weight	≈56t / ≈123459 lbs
Operation Altitude	3000m(>3000m derating)
Noise Level @1m	<75 dB(A)
IP Rating	IP55
Operating Temperature	-20°C to 55°C
Operating Humidity (RH)	0 to 95%
Storage Conditions	-20°C to 30°C, Up to 95% RH, non-condensing State of Energy (SoE): 50% initial
Communication Interface	CAN, RS485, Wi-Fi
Certifications	IEC62477-1, IEC61000-6/2/4, UN3536

All In One Residential ESS

single-phase 120/240Vac



HESS-5K10-US, HESS-5K20-US

-  **REPT LFP Battery, Stable and Safe Module, Pack, System, Triple Protection**
-  **Adjustable Power in Each Phase Support Diesel Generator Control(DI/DO)**
-  **Modular Design, Plug and Play Mobile APP Monitoring**
-  **Supporting 200% Oversized PV Power On&OFF Grid Parallel System**







Hybrid Inverter Model	GSL-HESS-5K10-US	GSL-HESS-5K20-US
Battery Parameter		
Battery Type	LFP	
Battery Energy	10.24kWh	20.48kWh
Number of Batteries	2	4
Battery Voltage	51.2V	
Voltage Range	42V ~ 60V	
Cycling Lifespan	6500 (80%DOD,0.5C,25°C)	
Max. Charging / Discharging Current	100A	
Option	9 units(up to 46.08kWh)	
Protection Degree	IP20	
Dimension (W*D*H)	655*353*205mm *2 / 25.8*14.0*8.1 in *2	655*353*205mm *4 / 25.8*14.0*8.1 in *4
Weight	92kg / 203 lbs	184kg / 406 lbs
Battery Certification	IEC62619, CE-EMC, UN38.3, MSDS	
Output		
Rated Output Power	5000W	
Max. Peak Power	10,000VA	
Load Capacity of Motor	4PH	
Wave Form	Pure Sine Wave	
Rated Frequency	50Hz/60Hz	
Rated Output Voltage	120Vac (single phase)	
Solar Input		
Solar Charge Type	MPPT	
Max. Output Power	5500W	
Max. Solar Open Circuit Voltage	500Vdc	
Grid/Generator Input		
Input Voltage Range	90 ~ 280Vac	
Bypass Overload Current	40A	
Battery Charging		
Max. Solar Charging Current	100A	
Max. Grid/Generator Charging Current	60A	
General Specifications		
Dimension (W*D*H)	560*180*1510mm / 20.0*7.1*59.4 in	1200*180*1510mm / 47.2*7.1*59.4 in
Weight	128kg / 282 lbs	228kg / 503 lbs
Protection Degree	IP20	
Cooling Mode	Natural cooling	
Certification	EN61000, C2, CE(EN62109-1)	

All In One Residential ESS

single-phase 230Vac



GSL-HESS-5K10, GSL-HESS-5K20

-  **REPT LFP Battery, Stable and Safe Module, Pack, System, Triple Protection**
-  **Adjustable Power in Each Phase Support Diesel Generator Control(DI/DO)**
-  **Modular Design, Plug and Play Mobile APP Monitoring**
-  **Supporting 200% Oversized PV Power On&OFF Grid Parallel System**




Hybrid Inverter Model	GSL-HESS-5K10-EU	GSL-HESS-5K20-EU
Battery Parameter		
Battery Type	LFP	
Battery Energy	10.24kWh	20.48kWh
Number of Batteries	2	4
Battery Voltage	51.2V	
Voltage Range	42V ~ 60V	
Cycling Lifespan	6500 (80%DOD,0.5C,25°C)	
Max. Charging / Discharging Current	100A	
Option	9 units(up to 46.08kWh)	
Protection Degree	IP20	
Dimension (W*D*H)	655*353*205mm *2 / 25.8*14.0*8.1 in *2	655*353*205mm *4 / 25.8*14.0*8.1 in *4
Weight	92kg / 203 lbs	184kg / 406 lbs
Battery Certification		
IEC62619, CE-EMC, UN38.3, MSDS		
Output		
Rated Output Power	5000W	
Max. Peak Power	10,000VA	
Load Capacity of Motor	4PH	
Wave Form	Pure Sine Wave	
Rated Frequency	50Hz/60Hz	
Rated Output Voltage	230Vac (single phase)	
Solar Input		
Solar Charge Type	MPPT	
Max. Output Power	5500W	
Max. Solar Open Circuit Voltage	500Vdc	
Grid/Generator Input		
Input Voltage Range	90 ~ 280Vac	
Bypass Overload Current	40A	
Battery Charging		
Max. Solar Charging Current	100A	
Max. Grid/Generator Charging Current	60A	
General Specifications		
Dimension (W*D*H)	560*180*1510mm / 20.0*7.1*59.4 in	1200*180*1510mm / 47.2*7.1*59.4 in
Weight	128kg / 282 lbs	228kg / 503 lbs
Protection Degree	IP20	
Cooling Mode	Natural cooling	
Certification	EN61000, C2 , CE(EN62109-1)	

All In One Residential ESS



GSL-AIO-6K10, GSL-AIO-6K20

-  **REPT LFP Battery, Stable and Safe Module, Pack, System, Triple Protection**
-  **Adjustable Power in Each Phase Support Diesel Generator Control(DI/DO)**
-  **Modular Design, Plug and Play Mobile APP Monitoring**
-  **Supporting 200% Oversized PV Power On&OFF Grid Parallel System**





Hybrid Inverter Model	GSL-AIO-6K10	GSL-AIO-6K20
Battery Parameter		
Battery Type	LFP	
Battery Energy	10.24kWh	20.48kWh
Number of Batteries	2	4
Battery Voltage	51.2V	
Voltage Range	42V ~ 60V	
Max. Charging / Discharging Current	100A	
DC input (PV)		
Max. Allowable Input power	8000W	
Max. Input Voltage	580V	
Rated Input Voltage	350V	
Start-up Voltage	120V	
MPPT Voltage Range	120 ~ 520V	
Max. Input Current	15A/15A	
Max. Short Circuit Current	22.5A/22.5A	
Number of MPPT/Max. Number of PV Strings	2/2	
AC Output (Grid)		
Rated output power	6000W	
Max. Output Power	6.6kW	
Max. Output Apparent Power	6.6kVA	
Rated Output Current	27.3A	
Max. Output Current	30A	
Switching Time	<10ms	
Rated Output Voltage/Frequency	L/N/PE 220V/230V 50Hz/60Hz	
Output Power Factor	0.8 leading ... 0.8 lagging	
Total Current Harmonic Distortion Rate (on-grid)	<2%	
AC Output (Load)		
Max. Output Power	6.6kW	
Max. Output Apparent Power	6.6kVA	
Max. Output Current	30A	
Rated Output Voltage/Frequency	L/N/PE 220V/230V 50Hz/60Hz	
Total Current Harmonic Distortion Rate (off-grid)	<3%	
AC Output (Charging Pile)		
Max. Output Apparent Power	7.4kVA	
Max. Output Current	40A	
Rated Output Voltage/Frequency	L/N/PE 220V/230V 50Hz/60Hz	
AC Input		
Max. Output Apparent Power	10kVA	
Max. Output Current	50A	
Rated Output Voltage/Frequency	L/N/PE 220V/230V 50Hz/60Hz	
Efficiency		
Max. PV Efficiency	97.50%	
Standard		
Safety Regulations	IEC62109-1/-2	
Electromagnetic Compatibility	EN61000-6-1/EN61000-6-3	
Basic Parameter		
Dimension (W*D*H)	595*435*630mm / 23.4*17.1*24.8 in	595*435*1070mm / 23.4*17.1*42.1 in
Weight	125.5kg / 277 lbs	225.5kg / 497 lbs
Cooling Method	air-cooling, wind speed adjustable	
Protection Class	IP20	
Ambient Temperature	-25°C ~ +60°C (>45degree)	
Maximum Altitude	3000m	
Communication Mode	RS485/WIFI/GPRS (external communication bar)	

All In One Residential ESS



GSL-AIO-5K10, GSL-AIO-5K20

-  **REPT LFP Battery, Stable and Safe Module, Pack, System, Triple Protection**
-  **Adjustable Power in Each Phase Support Diesel Generator Control(DI/DO)**
-  **Modular Design, Plug and Play Mobile APP Monitoring**
-  **Supporting 200% Oversized PV Power On&OFF Grid Parallel System**



Hybrid Inverter Model	GSL-AIO-5K10	GSL-AIO-5K20
Battery Parameter		
Battery Type	LFP	
Battery Energy	10.24kWh	20.48kWh
Number of Batteries	1	2
Battery Voltage	51.2V	
Voltage Range	42V ~ 60V	
Max. Charging / Discharging Current	100A	
Option	16PCS parallel supported (max 160kWh)	
Dimension (W*D*H)	560*180*920mm *2 / 20.0*7.1*36.2 in *2	
Weight	100kg / 220 lbs	200kg / 440 lbs
Off-grid Output		
Nominal Output Power	5000W	
Nominal Voltage	220V/230V/240V	
Nominal Frequency	50/60Hz	
Nominal Output Current	22.7A	
Nominal Output THDu	<2%	
On-grid Parameter		
Nominal Output Power	6000W	
Max. Input Current	27.2A	
Nominal Grid Voltage	220V/230V/240V	
Output Current from Grid	27.2A	
Input Voltage Range	184 ~ 276V	
Nominal Frequency	45-65Hz	
PV Input		
Max. Input Power	7500Wp	
Starting Voltage	95V	
Max. Input Voltage	600V	
MPPT Operating Voltage Range	80 ~ 550V	
Full Load MPPT Operating Voltage Range	350 ~ 500V	
Number of MPPTs	2	
Max. Input String Per MPPT	1	
Nominal Input Voltage	360V	
Max. Input Current	18A/18A	
Efficiency		
Max. PV Efficiency	98.00%	
Euro PV Efficiency	97.50%	
Max. Battery Charging Efficiency	95.20%	
Max. Battery Discharging Efficiency	95.20%	
General Specifications		
Dimension (W*H*D)	560*180*1510mm / 20.0*7.1*59.4 in	1200*180*1510mm / 47.2*7.1*59.4 in
Weight	128kg / 282 lbs	228kg / 503 lbs
Noise	<25dB(A)	
Operating Temperature Range	-20°C~+55°C	
Cooling Method	Natural cooling	
Ingress Protection Grade	IP65	
Display	LED/APP/WIFI/4G/Bluetooth	
Communication Port	RS485/CAN/DRED/Dry contact/Parallel port	
Protection	DC Switch, PV Insulation Resistance Detection, Residual Current Monitoring, Anti-islanding Protection, Reverse Polarity Protection(PV&Battery) AC Short Circuit Protection, AC Overcurrent Protection, AC Overvoltage Protection:LEVEL III;PV&Battery:LEVEL II, Surge Protection, Lightning Protection:TYPE II	
Inverter Certification		
CE_LVD	IEC 62109-1, IEC 62109-2, EN 62109-1, EN 62109-2	
CE EMC	EN61000-6-1, EN61000-6-2, EN61000-6-3, EN61000-6-4	
Grid	VDE-AR-N 4105, C10-11, G98/G99, CEI 0-21, EN50549, NRS 097-2-1, AS 4777.2, R25,UNE217001,UNE217002,NTS 2.1	
Battery Certification		
IEC62619, CE-EMC, UN38.3, MSDS		

Commercial&Industrial ESS

IEC62619, CE

6500+ life cycles



GSL-HV51100 5.12KWH Module
30kVA 40/50/60kWh

- ★ Standardized design, high degree of modularity
- ★ GSL self developed BMS, 10 years tested
- ★ Adopts high-performance PCS to ensure high safety and stability
- ★ Fully integrated, pre-configured package system reduces on-site installation time
- ★ The modular design allows for easy capacity expansion. A single system can be expanded up to 130kWh.



Model	GSL-BESS-30K40	GSL-BESS-30K50	GSL-BESS-30K60
System Specification			
Nominal Output Power/UPS Power (W)	30,000		
AC Output Frequency and Voltage	50/60Hz; 3L/N/PE 220/380, 230/400Vac		
Grid Type	Three phase		
Energy Configuration (kWh)	40.96	51.2	61.44
Dimension (W x D x H)	1100*750*2200mm / 43.3*29.5*86.6 in (no contain inverter)		
Weight Appr. (no contain inverter)	612.8kgs / 1351 lbs	696kgs / 1534 lbs	779.2kgs / 1719 lbs
Max Charge & Discharge Current (A)	60		
Battery Operating Voltage (V)	100 ~ 800		
Battery Chemistry	LiFePO4		
IP Rating of Enclosure	IP55		
System Certification	UN38.3, IEC62619, CE, CEI 0-21, VDE-AR-N 4105, IEC 62109		
Installation Style	Floor-Mounted		
Warranty	10 years		
Inverter Technical Specification			
Max. PV Input Power (W)	39000		
Max. PV Input Current (A)	36+36+36		
Rated PV Input Voltage (Vdc)	600		
Start Up DC Voltage (Vdc)	180		
MPPT Voltage Range (Vdc)	150-850		
Max. PV Short-circuit Current (A)	55+55+55		
Number of MPPT	3		
Peak Power (off grid)	1.5 time of rated power, 10s		
Power Factor	0.8 leading to 0.8 lagging		
THD	<3%		
DC injection current (mA)	<0.5In		
Display	LCD		
Operating Temperature Range (°C)	-40 ~ 60(>45°C derating)		
Relative Humidity	15% ~ 85% (No Condensing)		
Dimension (W x D x H, mm)	420x233x670		
Inverter Communication	CAN, RS485, WIFI, ETH		
Safety EMC / Standard	IEC/EN 62109-1, IEC/EN 62109-2, IEC/EN, 61000-6-1, IEC/EN 61000-6-2, IEC/EN61000-6-3, IEC/EN 61000-6-4		
Grid Regulation	VDE4105, IEC61727/62116, VDE0126, AS4777.2, CEI 0 21, EN50549-1, G98, G99, C10-11, UNE217002, NBR16149/NBR16150		
Max. Efficiency	97.6%		
Max. charging/discharging efficiency	91%		
Max Parallel connection sets	10		
Battery Technical Specification			
Battery Module Nominal Voltage (V)	409.6	512	614.4
Battery Capacity (Ah)	100		
Battery Energy (kWh)	40.96	51.2	61.44
BMS Communication	CAN		
BMS parallel support connection	3sets(Standard), 32 sets (Extra BAU module)		
Max Charge & Discharge Current (A)	100		
Operating Temperature Range	Charge: 0 ~ 55°C / Discharge: -20°C ~ 55°C		
Cycle Life	≥ 6500(@25°C±2°C,0.5C/0.5C,70%EOL)		
Short Circuit Protection	YES		
Over Current Protection	YES		
Over Charge Protection	YES		
Over Temperature Protection	YES		
Cell Over Voltage Protection	YES		
Cell Over Under Protection	YES		
Cell Discharge Protection	YES		

Commercial&Industrial ESS

IEC62619, CE

6500+ life cycles



GSL-HV51200 10.24KWH Module
50kVA 80/100/120/130kWh

- ★ Standardized design, high degree of modularity
- ★ GSL self developed BMS, 10 years tested
- ★ Adopts high-performance PCS to ensure high safety and stability
- ★ Fully integrated, pre-configured package system reduces on-site installation time
- ★ The modular design allows for easy capacity expansion. A single system can be expanded up to 130kWh.



Model	GSL-BESS-50K100	GSL-BESS-50K120	GSL-BESS-50K130
System Specification			
Nominal Output Power/UPS Power (W)	50,000		
AC Output Frequency and Voltage	50/60Hz; 3L/N/PE 220/380, 230/400Vac		
Grid Type	Three phase		
Energy Configuration (kWh)	81.92	102.4	122.88
Dimension (W x D x H)	1400*1100*1650mm / 55.1*43.3*65 in (no contain inverter)		
Weight Appr. (no contain inverter)	81.92kgs / 181 lbs	1172.0kgs / 2584 lbs	1294.4kgs / 2854 lbs
Max Charge & Discharge Current (A)	100		
Battery Operating Voltage (V)	500 ~ 800		
Battery Chemistry	LiFePO4		
IP Rating of Enclosure	IP55		
System Certification	UN38.3, IEC62619, CE, CEI 0-21, VDE-AR-N 4105, IEC 62109		
Installation Style	Floor-Mounted		
Warranty	10 years		
Inverter Technical Specification			
Max. PV Input Power (W)	65000		
Max. PV Input Current (A)	36+36+36+36		
Rated PV Input Voltage (Vdc)	600		
Start Up DC Voltage (Vdc)	180		
MPPT Voltage Range (Vdc)	150-850		
Max. PV Short-circuit Current (A)	55+55+55+55		
Number of MPPT	4		
Peak Power (off grid)	1.5 time of rated power, 10s		
Power Factor	0.8 leading to 0.8 lagging		
THD	<3%		
DC injection current (mA)	<0.5In		
Display	LCD		
Operating Temperature Range (°C)	-40 ~ 60(>45°C derating)		
Relative Humidity	15% ~ 85% (No Condensing)		
Dimension (W x D x H, mm)	420x233x670		
Inverter Communication	CAN, RS485, WIFI, ETH		
Safety EMC / Standard	IEC/EN 62109-1, IEC/EN 62109-2, IEC/EN, 61000-6-1, IEC/EN 61000-6-2, IEC/EN61000-6-3, IEC/EN 61000-6-4		
Grid Regulation	VDE4105, IEC61727/62116, VDE0126, AS4777.2, CEI 0 21, EN50549-1, G98, G99, C10-11, UNE217002, NBR16149/NBR16150		
Max. Efficiency	97.6%		
Max. charging/discharging efficiency	91%		
Max Parallel connection sets	10		
Battery Technical Specification			
Battery Module Nominal Voltage (V)	409.6	512	614.4
Battery Capacity (Ah)	200		
Battery Energy (kWh)	81.92	102.4	122.88
BMS Communication	CAN		
BMS parallel support connection	3sets(Standard), 32 sets (Extra BAU module)		
Max Charge & Discharge Current (A)	100		
Operating Temperature Range	Charge: 0 ~ 55°C / Discharge: -20°C ~ 55°C		
Cycle Life	≥ 6500(@25°C±2°C,0.5C/0.5C,70%EOL)		
Short Circuit Protection	YES		
Over Current Protection	YES		
Over Charge Protection	YES		
Over Temperature Protection	YES		
Cell Over Voltage Protection	YES		
Cell Over Under Protection	YES		
Cell Discharge Protection	YES		

LV Single-phase Hybrid Inverter



3.6/5kW

8kW



Colorful touch LCD, IP65 protection degree



DC couple and AC couple to retrofit existing solar system

16

Max. 16pcs parallel for on-grid and off-grid operation; Support multiple batteries parallel

190

Max. charging/discharging current of 190A

6

6 time periods for battery charging /discharging



Support storing energy from diesel generator

Model	GSL-3.6K-EU	GSL-5K-EU	GSL-8K-EU
Battery Input Data			
Battery Type	Lead-acid or Li-Ion		
Battery Voltage Range	40 ~ 60V		
Max. Charging Current	90A	120A	190A
Max. Discharging Current	90A	120A	190A
Number of battery input	Yes		
Charging Curve	3 Stages / Equalization		
Charging Strategy for Li-Ion Battery	Self-adaption to BMS		
PV String Input Data			
Max. DC Input Power	4680W	6500W	10400W
Rated PV Input Voltage	370 (125 ~ 500)V		
Start-up Voltage	125V		
MPPT Voltage TRange	150-425V		
Full Load DC Voltage Range	300-425V		200-425V
PV Input Current	13A+13A		26A+26A
Max. PV _{SC}	17A+17A		34A+3 4A
Number of MPPT / Strings per MPPT	2/1+1		2
AC Output Data			
Rated AC Output and UPS Power	3600W	5000W	8000W
Max. AC Output Power	3690W	5500W	8800W
AC Output Rated Current	16.4A	22.7A	36.4/34.8A
Max. AC Current	18A	25A	40/38.3A
Max. Continuous AC Passthrough	35A		50A
Peak Power (off grid)	2 time of rated power, 10 S		
Power Factor	0.8 leading to 0.8 lagging		
Output Frequency and Voltage	50/60Hz; L/N/PE 220/230Vac (single phase)		
Grid Type	Single Phase		
DC injection current (mA)	THD<3% (Linear load<1.5%)		
Efficiency			
Max. Efficiency	97.60%		
Euro Efficiency	97.00%		
MPPT Efficiency	99.90%		
Protection			
Integrated	PV Input Lightning Protection, Anti-islanding Protection, PV String Input Reverse Polarity Protection, Insulation Resistor Detection, Residual Current Monitoring Unit, Output Over Current Protection, Output Shorted Protection, Surge protection		
Output Over Voltage Protection	DC Type II/AC Type III		
Certifications and Standards			
Grid Regulation	CEI 0-21, VDE-AR-N 4105, NRS 097, IEC 62116, IEC 61727, G99, G98, VDE 0126-1-1, RD 1699, C10-11		
Safety EMC / Standard	IEC/EN 61000-6-1/2/3/4, IEC/EN 62109-1, IEC/EN 62109-2		
General Data			
Operating Temperature Range (°C)	-45 ~ 60°C, >45°C derating		
Cooling	Natural cooling		
Noise (dB)	<30 dB		
Communication with BMS	RS485; CAN		
Weight	20.5kg / 45 lbs		32kg / 71 lbs
Size (W*H*D)	330*580*232mm / 13.0*22.8*9.1 in		420*670*233mm / 16.5*26.4*9.2 in
Protection Degree	IP65		
Installation Style	Wall-mounted		
Warranty	5 years		

LV Single-phase Hybrid Inverter



GSL-12/ 14/ 16K-EU



Colorful touch LCD, IP65 protection degree



DC couple and AC couple to retrofit existing solar system

16

Max. 16pcs parallel for on-grid and off-grid operation; Support multiple batteries parallel

290

Max. charging/discharging current of 290A

6

6 time periods for battery charging /discharging



Support storing energy from diesel generator

Model	GSL-12K-EU	GSL-14K-EU	GSL-16K-EU
Battery Data			
Battery Type	Lead-acid or Li-Ion		
Battery Voltage Range	40 ~ 60V		
Max. Charging Current	220A	250A	290A
Max. Discharging Current	220A	250A	290A
UPS Power	12000W	14000W	16000W
External Temperature Sensor	Yes		
Charging Curve	3 Stages / Equalization		
Charging Strategy for Li-Ion Battery	Self-adaption to BMS		
PV String Input Data			
Max. DC Input Power	15600W	18200W	20800W
Max. DC Input Voltage	500V		
Start-up Voltage	150V		
MPPT Range	150 ~ 425V		
Rated DC Input Voltage	370V		
PV Input Current	26+26A	26+26+26A	26+26+26A
Max. PV _{SC}	44+44+44A		
Number of MPPT / Strings per MPPT	3/2		
AC Output Data			
Rated AC Output	12000W	14000W	16000W
AC Output Rated Current	52.2A	60.9A	69.6A
Max. Continuous AC Passthrough	100A		
Peak Power (off grid)	2 time of rated power, 5 S		
Power Factor	0.8 leading to 0.8 lagging		
Output Frequency and Voltage	50/60Hz; L/N/PE 220/230Vac (single phase)		
Grid Type	Single Phase		
DC injection current (mA)	<0.5%I _n		
Backup Data			
Backup Power	10000W	12000W	14000W
Backup Rated Current	43.5A	52.2A	60.9A
Backup UPS	6ms Automatic switchover time		
Efficiency			
Max. Efficiency	97.60%		
Euro Efficiency	96.50%		
MPPT Efficiency	99.90%		
Protection			
Integrated	PV Input Lightning Protection, Anti-islanding Protection, PV String Input Reverse Polarity Protection, Insulation Resistor Detection, Residual Current Monitoring Unit, Output Over Current Protection, Output Shorted Protection, Surge protection		
Output Over Voltage Protection	DC Type II/AC Type III		
Certifications and Standards			
Grid Regulation	CEI 0-21, VDE-AR-N 4105, NRS 097, IEC 62116, IEC 61727, G99, G98, VDE 0126-1-1, RD 1699, C10-11		
Safety EMC / Standard	IEC/EN 61000-6-1/2/3/4, IEC/EN 62109-1, IEC/EN 62109-2		
General Data			
Operating Temperature Range (°C)	-45 ~ 60°C, >45°C derating		
Cooling	Smart cooling		
Noise (dB)	<30 dB		
Communication with BMS	RS485; CAN		
Weight	48.5kg / 107 lbs		
Size (W*H*D)	464*798.4*300mm / 18.3*31.4*11.8 in		
Protection Degree	IP65		
Installation Style	Wall-mounted		
Warranty	5 years		
Features			
Max. Number of Parallel (PCS)	16		

LV Three-phase Hybrid Inverter



GSL-8/ 10/ 12K-3PH-EU

- 100** 100% unbalanced output, each phase; Max. output up to 50% rated power
- DC** DC couple and AC couple to retrofit existing solar system
- 16** Max. 16pcs parallel for on-grid and off-grid operation; Support multiple batteries parallel
- 240** Max. charging/discharging current of 240A
- 6** 6 time periods for battery charging /discharging
- Generator** Support storing energy from diesel generator

Model	GSL-8K-3PH-EU	GSL-10K-3PH-EU	GSL-12K-3PH-EU
Battery Input Data			
Battery Type	Lead-acid or Li-Ion		
Battery Voltage Range	40 ~ 60V		
Max. Charging Current	190A	210A	240A
Max. Discharging Current	190A	210A	240A
External Temperature Sensor	Yes		
Charging Curve	3 Stages / Equalization		
Charging Strategy for Li-Ion Battery	Self-adaption to BMS		
PV String Input Data			
Max. DC Input Power	10400W	13000W	15600W
Rated PV Input Voltage	550 (160 ~ 800)V		
Start-up Voltage	160V		
MPPT Voltage Range	200-650V		
Full Load DC Voltage Range	350-650V		
PV Input Current	13+13A	26+13A	
Max. PV I _{SC}	17+17A	34+17A	
No. of MPP Trackers	2		
No. of Strings per MPP Tracker	1+1	2+1	
AC Output Data			
Rated AC Output and UPS Power	8000W	10000W	12000W
Max. AC Output Power	8800W	11000W	13200W
AC Output Rated Current	12.1/11.6A	15.2/14.5A	18.2/17.4A
Max. AC Current	18.2/17.4A	22.7/21.7A	27.3/26.1A
Max. Continuous AC Passthrough (A)	45		
Peak Power (off grid)	2 time of rated power, 10s		
Power Factor	0.8 leading to 0.8 lagging		
Output Frequency and Voltage	50/60Hz; 3L/N/PE 220/380, 230/400Vac		
Grid Type	Three Phase		
Total Harmonic Distortion (THD)	<3% (of nominal power)		
DC current injection	<0.5% I _n		
Efficiency			
Max. Efficiency	97.60%		
Euro Efficiency	97.00%		
MPPT Efficiency	99.90%		
Protection			
Integrated	PV Input Lightning Protection, Anti-islanding Protection, PV String Input Reverse Polarity Protection, Insulation Resistor Detection, Residual Current Monitoring Unit, Output Over Current Protection, Output Shorted Protection, Surge protection		
Output Over Voltage Protection	DC Type II/AC Type III		
Certifications and Standards			
Grid Regulation	VDE4105, IEC61727/62116, VDE0126, AS4777.2, CEI 0 21, EN50549-1, G98, G99, C10-11, UNE217002, NBR16149/NBR16150		
Safety EMC / Standard	IEC/EN 61000-6-1/2/3/4, IEC/EN 62109-1, IEC/EN 62109-2		
General Data			
Operating Temperature Range (°C)	-40 ~ 60°C, >45°C derating		
Cooling	Smart cooling		
Noise (dB)	<45 dB		
Communication with BMS	RS485; CAN		
Weight	33.6kg / 74 lbs		
Size (W*H*D)	422*699.3*279mm / 16.6*27.5*11.0 in		
Protection Degree	IP65		
Installation Style	Wall-mounted		
Warranty	5 years		

LV Split-phase Hybrid Inverter



GSL-8/ 10/ 12K-US



Colorful touch LCD, IP65 protection degree



Wide input voltage range. Compatible with Lithium-ion batteries



Max. charging/discharging current of 200A



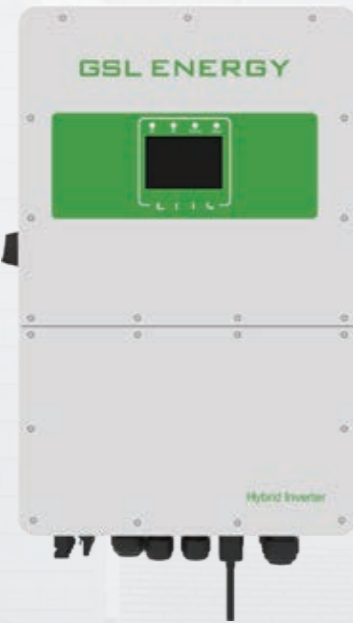
Advanced MPPT with up to 99.9% efficiency
Up to 22A*2 PV input current



Support storing energy from diesel generator

Model	GSL-8K-US	GSL-10K-US	GSL-12K-US	Can Be Set
Inverter Output				
Rated Output Power	8,800W	10,000W	12,000W	
Max. Peak Power	17,600VA	20,000VA	24,000VA	
Rated Output Voltage	120/240Vac, single-phase / split-phase / three-phase(parallel)			✓
Load Capacity of Motors	5HP	6HP		
Rated AC Frequency	50/60Hz			
Battery				
Battery Type	Li-ion / User-defined			✓
Rated Battery Voltage	48V			
Max. PV Charging Current	200A			✓
Max. Mains Charging Current	120A			✓
Max. Alternator Charging Current	60A			
Max. Hybrid Charging Current	200A			✓
PV Input				
Num. of MPPT	2			
Max. PV Array Power	5,500W+5,500W	6,600W+6,600W		
Max. Input Current	22A+22A			
Max. Open-circuit Voltage	500Vdc+500Vdc			
MPPT Operating Voltage Range	125 ~ 425Vdc			
Mains General Input				
Input Voltage Range	90 ~ 140Vac			✓
Frequency Range	50/60Hz			
General Data				
Num. of Paralle	1~ 6 units			
Dimensions	750*440*240mm / / 29.5*17.3*9.4 in			
Weight	0 ~ 4000M (over 2000M derating)			
Protection Degree	42kg / 93 lbs			
Operating Temperature Range	IP65			
Cooling Method	-25 ~ 60°C, >45°C derated			
Warranty	5 years			
Communication				
Embedded Interfaces	RS485 / CAN / USB / Dry contact			✓
External Modules (optional)	Wi-Fi / GPRS			✓
Certification				
US Version	UL 1741: 2021, CSA C22.2#107.1:2016, CSA C22.2#330:2017 IEEE1547:2018, IEEE1547.1:2020, HECO SRD.IEEE-1547.1:2020			

HV Three-phase Hybrid Inverter



GSL-5/ 6/ 8/ 10/ 12/ 15/ 20/ 25KHV-EU

- 100** 100% unbalanced output, each phase
- AC couple** to retrofit existing solar system
- 10** Max. 10pcs parallel for on-grid and off-grid operation; Support multiple batteries parallel
- 50** Max. charging/discharging current of 50A
- 6** 6 time periods for battery charging /discharging
- Support** storing energy from diesel generator

Model	GSL-5KHV-EU	GSL-6KHV-EU	GSL-8KHV-EU	GSL-10KHV-EU	GSL-12KHV-EU	GSL-15KHV-EU	GSL-20KHV-EU	GSL-25KHV-EU	
Battery Input Data									
Battery Type	Lithium-ion								
Battery Voltage Range	160 ~ 700V								
Max. Charging Current	30A	30A	37A			50A			
Max. Discharging Current	30A	30A	37A			50A			
Charging Strategy for Li-Ion Battery	Self-adaption to BMS								
Number of battery input	1								
PV String Input Data									
Max. DC Input Power	10000W	12000W	16000W	20000W	24000W	30000W	40000W	50000W	
Max. PV Input Power	8000W	9600W	12800W	16000W	19200W	24000W	32000W	40000W	
Max. DC Input Voltage	1000V								
Start-up Voltage	180V								
MPPT Range	150 ~ 850V								
Rated DC Input Voltage	600V						700V		
Max. Operating PV Input Current	20+20A			26+20A			26+26A		
Max. Input Short-Circuit Current	30+30A			39+30A			39+39A		
No. of MPP Trackers	2/1+1			2/2+1			2/2+2		
No. of Strings per MPP Tracker									
AC Output Data									
Rated AC Input/Output Active Power	5000W	6000W	8000W	10000W	12000W	15000W	20000W	25000W	
Max. AC Input/Output Apparent Power	5500VA	6600VA	8800VA	11000VA	13200VA	16500VA	22000VA	27500VA	
Rated AC Input/Output Current	7.6/7.3A	9.1/8.7A	12.2/11.6A	15.2/14.5A	18.2/17.4A	22.8/21.8A	30.4/29A	37.9/36.3A	
Max. AC Input/Output Current	8.4/8A	10/9.6A	13.4/12.8A	16.7/16A	20/19.2A	25/24A	33.4/31.9A	41.7/39.9A	
Max. Continuous AC Passthrough (grid to load)	40A						80A		
Peak Power (off grid)	1.5 times of rated power, 10s								
Power Factor Adjustment Range	0.8 leading to 0.8 lagging								
Rated Input/Output Voltage/Range	220/380V, 230/400V 0.85Un-1.1Un								
Rated Input/Output Grid Frequency/Range	50/45-55, 60/55-65								
Grid Connection Form	3L+N+PE								
Total Current Harmonic Distortion THDi	<3% (of nominal power)								
DC Injection Current	<0.5% In								
Efficiency									
Max. Efficiency	97.60%								
Euro Efficiency	97.00%								
MPPT Efficiency	>99%								
Equipment Protection									
Integrated	DC Polarity Reverse Connection Protection, AC Output Overcurrent Protection AC Output Overvoltage Protection, AC Output Short Circuit Protection, Thermal Protection DC Terminal Insulation Impedance Monitoring, DC Component Monitoring, Ground Fault Current Monitoring Power Network Monitoring, Island Protection Monitoring, Earth Fault Detection, DC Input Switch Overvoltage Load Drop Protection, Residual Current (RCD) Detection, Surge protection level								
Surge Protection Level	TYPE II(DC), TYPE II(AC)								
Interface									
Communication Interface	RS485/RS232/CAN								
Monitor Mode	GPRS/WIFI/Bluetooth/4G/LAN(optional)								
General Data									
Operating Temperature Range (°C)	-40 ~ 60°C, >45°C derating								
Permissible Ambient Humidity	0-100%								
Permissible Ambient	2000m								
Noise (dB)	<55								
Ingress Protection (IP) Rating	IP65								
Inverter Topology	Non-Isolated								
Over Voltage Category	OVC II(DC), OVC III(AC)								
Cabinet Size (WxHxD mm)	408*638*237mm / 16.01*25.1*9.3 in (Excluding Connectors and Brackets)								
Weight	30.5kg / 67 lbs								
Type of Cooling	Natural Cooling			Intelligent Air Cooling					
Warranty	5 Years/10 Years the Warranty Period Depends the Final Installation Site of Inverter, More Info Please Refer to Warranty Policy								
Grid Regulation	IEC 61727, IEC 62116, CEI 0-21, EN 50549, NRS 097, RD 140, UNE 217002, OVE-Richtlinie R25, G99, VDE-AR-N 4105								
Safety / EMC Standard	IEC/EN 61000-6-1/2/3/4, IEC/EN 62109-1, IEC/EN 62109-2								

HV Three-phase Hybrid Inverter



GSL-29.9/ 30/ 35/ 40/ 50KHV-EU



Colorful touch LCD, IP65 protection degree



DC couple and AC couple to retrofit existing solar system



Max. 10pcs parallel for on-grid and off-grid operation; Support multiple batteries parallel



Max. charging/discharging current of 100A



6 time periods for battery charging /discharging



Support storing energy from diesel generator

Model	GSL-29.9KHV-EU	GSL-30KHV-EU	GSL-35KHV-EU	GSL-40KHV-EU	GSL-50KHV-EU
Battery Input Data					
Battery Type	Lithium-ion				
Battery Voltage Range	160 ~ 800V				
Max. Charging Current	50+50A				
Max. Discharging Current	50+50A				
Charging Strategy for Li-ion Battery	Self-adaption to BMS				
Number of battery input	2				
PV String Input Data					
Max. DC Input Power	59800W	60000W	70000W	80000W	100000W
Max. DC Input Power	47840W	48000W	56000W	64000W	80000W
Max. DC Input Voltage	1000V				
Start-up Voltage	180V				
MPPT Voltage Range	150 ~ 850V				
Rated DC Input Voltage	600V				
Max. Operating PV Input Current	36+36+36A			36+36+36+36A	
Max. Input Short-Circuit Current	55+55+55A			55+55+55+55A	
No.of MPP Trackers/ No.of Strings per MPP Tracker	3/2+2+2			4/2+2+2+2	
AC Input/Output Data					
Rated AC Input/Output Active Power	29900W	30000W	35000W	40000W	50000W
Max. AC Input/Output Apparent Power	29900W	33000W	38500W	44000W	55000W
Rated AC Input/Output Current	45.4/43.4A	45.5/43.5A	53.1/50.8A	60.7/58A	75.8/72.5A
Max. AC Input/Output Current	45.4/43.4A	50/47.9A	58.4/55.8A	66.7/63.8A	83.4/79.9A
Max. Continuous AC Passthrough (grid to load)	200A				
Peak Power (off grid)	1.5 time of rated power, 10S				
Power Factor Adjustment Range	0.8 leading to 0.8 lagging				
Rated Input/Output Voltage/Range	220/380V, 230/400V 0.85Un-1.1Un				
Rated Input/Output Grid Frequency/Range	50/45-55, 60/55-65				
Grid Connection Form	3L+N+PE				
Total Current Harmonic Distortion THDi	<3% (of nominal power)				
DC Component of Grid	<0.5% In				
Efficiency					
Max. Efficiency	97.60%				
Euro Efficiency	97.00%				
MPPT Efficiency	99.00%				
Protection					
Integrated	DC Polarity Reverse Connection Protection, AC Output Overcurrent Protection, AC Output Overvoltage Protection, AC Output Short Circuit Protection, Thermal Protection DC Terminal Insulation Impedance Monitoring, DC Component Monitoring, Ground Fault Current Monitoring, Power Network Monitoring, Island Protection Monitoring, Earth Fault Detection, DC Input Switch, Overvoltage Load Drop Protection, Residual Current (RCD) Detection, Surge protection level				
Surge Protection Level	DC Type II/AC Type III				
Interface					
Communication Interface	RS485/RS232/CAN				
Monitor Mode	GPRS/WIFI/Bluetooth/4G/LAN(optional)				
General Data					
Operating Temperature Range (°C)	-40 ~ 60°C, >45°C derating				
Permissible Ambient Humidity	0~100%				
Permissible Altitude	2000m				
Noise	<65 dB (A)				
Ingress Protection(IP) Rating	IP65				
Inverter Topology	Non-Isolated				
Over Voltage Category	OVC II(DC), OVC III(AC)				
Size (W*H*D)	527*894*294mm / 20.7*35.2*11.6 in (Excluding Connectors and Brackets)				
Weight	80kg / 176 lbs				
Type of Cooling	Intelligent Air Cooling				
Warranty	5 Years (10 Years Optional) the Warranty Period Depends the Final Installation Site of Inverter, More Info Please Refer to Warranty Policy				
Grid Regulation	IEC 61727, IEC 62116, CEI 0-21, EN 50549, NRS 097, RD 140, UNE 217002, OVE-Richtlinie R25, G99, VDE-AR-N 4105				
Safety / EMC Standard	IEC/EN 61000-6-1/2/3/4, IEC/EN 62109-1, IEC/EN 62109-2				

Power Conversion System (PCS)



GSL-250K



GSL-500K



GSL-1000K



GSL-2000K



Modular design allows for easy expansion and maintenance



Specially designed duct ensures good heat dissipation



Supports multiple battery input, effectively improving battery cycle life



High frequency switches, low current ripples and high voltage quality



**Supports parallel system, can be extended to MW level
Built-in EMS function to reduce customer investment costs**

Model	GPS250K	GPS500K	GPS1000K	GPS2000K
DC-side Parameters				
Operate Voltage Range	680 ~ 1000V			
Maximum DC Current	400A	800A	1600A	2*1600A
Adaptive Battery	Lithium/lead-acid/Solar panel(MPPT)			
Charging Mode	According to BMS instructions/three-stage/MPPT			
Operating Mode	Constant current, constant power, MPPT, AC voltage source, DC voltage source			
AC-side Parameters (grid-connected)				
Rated Max.AC Power	275kVA	550kVA	1000/1100kVA	2200kVA
Rated AC Current	360kW	720kW	1440A	2*1440A
Rated AC Voltage	400V,3W+N+PE			
Rated AC Frequency	50/60Hz±5Hz			
THDI	< 3% (Rated power)			
Power Factor	-1leading to+1 lagging			
AC-side Parameters (off-connected)				
Rated AC Voltage	400V			
Rated AC Frequency	50/60Hz			
THDU	< 3%(Linear Load)			
Overload Capacity	110%, normal operation; 120%, 1 minute			
General Parameters				
Dimension (W*D*W)	1300*1000*2300mm / 51.2*39.4*90.6 in (Outdoor)	1300*1000*2300mm / 51.2*39.4*90.6 in (Outdoor)	1200*1000*2100mm / 47.2*39.4*82.7 in (Indoor)	2* 1200*1000*2100mm / 2* 47.2*39.4*82.7 in (Indoor)
Weight	2000kg / 4409 lbs	2100kg / 4629 lbs	1280kg / 2821 lbs	2560kg / 5643 lbs
On&Off-grid Switching	ATS			
Shutdown Self-discharge	< 0.1% Rated power (Without transformer)			
Display	LCD			
Relative Humidity	0 ~ 95% (no condensation)			
Noise	< 78dB			
Ambient Temperature	-25°C to +60°C(derating above 45°C)			
Cooling Mode	Intelligent air-cooled			
Altitude	3000m (> 3000m reduction)			
Communication Interface	RS485 / CAN/Ethernet			
PV Converter Parameters				
Model	GSL-DC250	GSL-DC500	GSL-DC1000	GSL-DC2000
Photovoltaic(PV) Port				
PV Input Voltage	315 ~ 600V			
PV Input Power	250kW	500kW	1000kW	2000kW
Max.PV Input Power	275kW	550kW	1100kW	2200kW
Max.PV Input Current	800A	1600A	3200A	2*3200A
MPPT Quantity	5/10	10/20	20/40	40/80
Battery port				
Battery Voltage Range	600 ~ 950V			
DC Side Bus Power	250kW	500kW	1000kW	2000kW
General Parameters				
Dimension (W*D*W)	900*1000*2100mm / 35.4*41.3*82.7 in (Outdoor)	1200*1000*2300mm / 47.2*41.3*80.7 in (Outdoor)	2* 1200*800*2100mm / 2* 47.2*31.5*82.7 in (Indoor)	4* 1200*800*2100mm / 4* 47.2*31.5*82.7 in (Indoor)
Weight (approx.)	650kg / 1433 lbs	850kg / 1873 lbs	1300kg / 2866 lbs	2600kg / 5732 lbs
Shutdown Self-discharge	< 0.1% Rated power (Without transformer)			
Display	LCD			
Relative Humidity	0 ~ 95% (no condensation)			
Noise	< 78dB			
Ambient Temperature	-25°C to +60°C(derating above 45°C)			
Cooling Mode	Intelligent air-cooled			
Altitude	3000m (> 2000m reduction)			
BMS Communication	CAN			
EMS Communication	RS485 / CAN/Ethernet			
System structure parameter				
Degree of Protection	IP55			
Dimension (W*D*H)	1300*1000*2300mm 900*1000*2150mm	1300*1000*2300mm 1200*1000*2300mm	20FT (6058*2438*2896mm)	40FT (12196*2438*2896mm)
Weight (approx.)	2.65tons	2.9tons	4tons	8tons

Home EV Charger

GSL-AC7000-AE-35

GSL-AC011K-AE-35

Feature



Innovativeness

- Ergonomic enclosure and user-friendly body design
- Optional design with T2S socket
- Switch between single-phase and three-phase

Secure and Safe

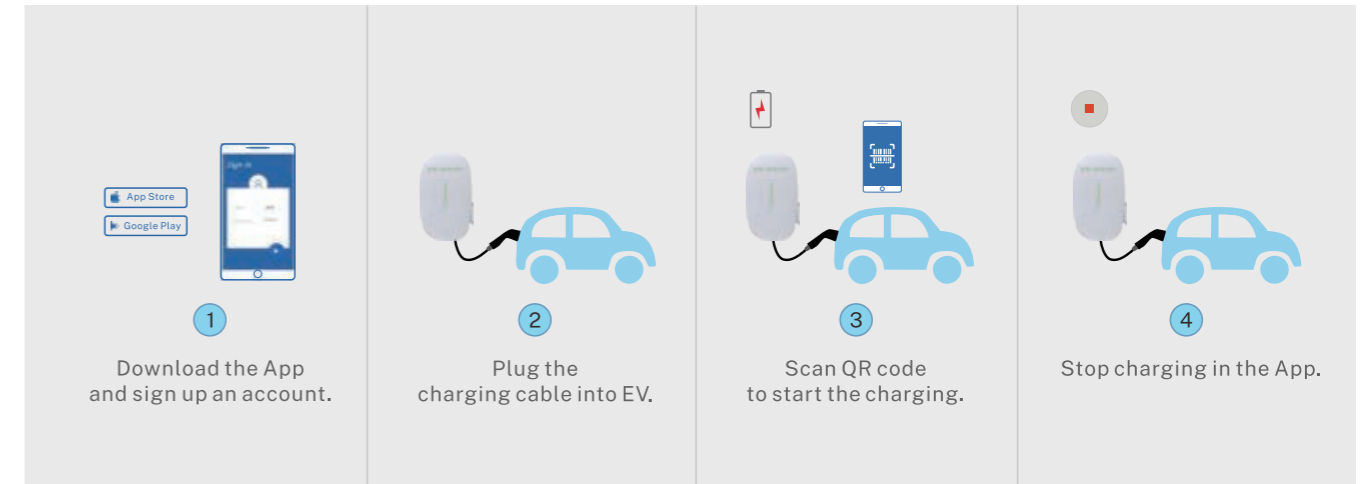
- 30mA Type A + 6 mA DC residual current protection
- Anti-welding protection
- Optional PEN-Fault protection

Intelligent Control

- Support multiple communication (WiFi/4G/Ethernet)
- Schedule charge by APP
- Load balance system control
- Compatible with PV

Flexible Option

- Type 2 cable / Type 2 socket options
- RFID authentication / Plug & Play / APP options to start
- Three colors options



Datasheet	Model	GSL-AC7000-AE-35	GSL-AC011K-AE-35
Input	Power Supply	1P+N+PE	3P+N+PE
	Rated Voltage	230V AC	400V AC
	Rated Current	32A	16A
	Frequency	50/60Hz	50/60Hz
Output	Output Voltage	230V AC	400V AC
	Maximum Current	32A	16A
	Output Power	7kW	11kW
User Interface	Charge Connector	Type 2 cable (Type 2 socket optional)	
	Cable Length	4m (7m optional)	
	Housing Material	Plastic PC940	
	LED Indicator	Green/Yellow/Red	
	RFID Reader	Mifare ISO/IEC 14443 A	
Communication	Start Mode	Plug&Play/RFID card/App	
	WiFi	WiFi (2.4GHz)	
	Bluetooth	Optional	
	3G/4G	Optional	
	Ethernet	Optional	
Secure and Safety	Protocol	OCPP 1.6 Json (OCPP 2.0 optional)	
	Ingress Protection	IP65	
	Impact Protection	IK10	
	Electrical Protection	Over current protection, Residual current protection, Surge protection, Over/Under voltage protection, Over/Under frequency protection, Over temperature protection	
	Certification	CE/CB	
	Certification Standard	EN IEC 61851-1:2019, IEC 61851-1:2017, IEC 62955:2018	
	RCD	30mA Type A + 6mA DC	
Warranty	2 years		
Environment	Installation	Wall-mount/Pole-mount	
	Work Temperature	-30°C~+50°C	
	Work Humidity	5%~95%	
	Work Altitude	<2000m	
Size	Product Dimension (H*W*D)	344*201*100mm / 13.5*7.9*3.9 in Cable Series	344*201*135mm / 13.5*7.9*5.3 in Socket Series

Home EV Charger

GSL-AC010K-US-A
GSL-AC010K-US-B

Feature



Innovation

High-end trendy streamline designed in minimal size. One step to install.

Flexible

Support wall-mount and floor-stand installation.
Two choices on input NEMA plug.
Three fascinating housing case colors.

Reliable

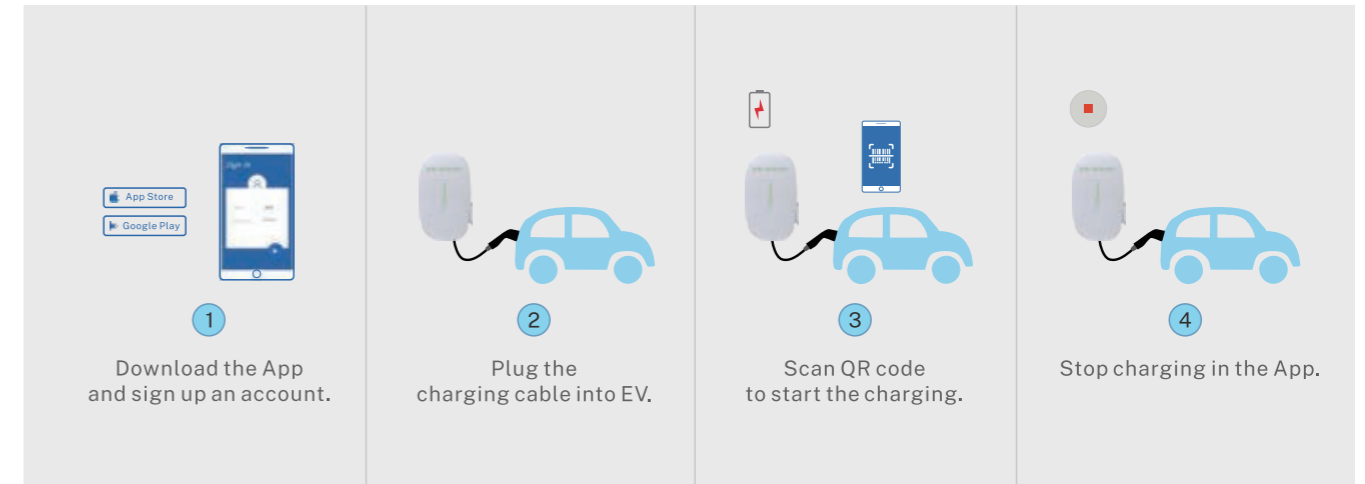
Adapt to harsh environments in where icy and snowy areas at -30°C and hot deserts at 45°C.

Compatibility

J1772™ connector suitable for all EVs on the road.
EVs interoperability of all major automobile manufacturer tested.

Secure and safe

Anti-welding protected, 20mA CCID leakage current protected.
UL listed and tested with the highest standards for electrical safety.
Backed by a 2-year warranty and 24/7 customer support.



Datasheet	Model	GSL-AC010K-US-A	GSL-AC010K-US-B
Input	Power Supply	Single-Phase	
	Rated Voltage	240V AC	
	Rated Current	40A	
	Frequency	60Hz	
	Maximum Current	40A	
	Plug	NEMA 14-50P	NEMA 6-50P
Output	Output Power	9.6kW	
	Charging Outlet	SAE J1772	
	Cable Length	23ft	
User Interface	Housing Material	Plastic PC EXL9330S	
	LED Indicator	Green/Yellow/Red	
	Start Mode	Plug & Play	
Safety	Leakage current protection	20 mA CCID	
	Enclosure Rating	NEMA 4	
	Electrical Protection	Over current protection, Residual current protection, Ground protection, Surge protection, Over/Under voltage protection, Over/Under frequency protection, Over temperature protection	
	Certification Standard	UL 2594, UL 2231-1 & -2, SAE J1772	
Environment	Limited Warranty	2 years	
	Installation	Wall-mount/Pole-mount	
	Work Temperature	-30°C~+50°C	
	Work Humidity	5%~95%	
	Work Altitude	<2000m	
Size	Product Dimension (H*W*D)	344*201*100mm / 13.5*7.9*3.9 in	
	Package Dimension (L*W*H)	430*330*315mm / 16.9*13.0*12.4 in	

Power Station



G600 LFP



G1000 PRO



G1500 PRO



G2000



G2000 LFP



G3000



Low-voltage



Short-circuit



Over-heat



Low-temperature protection



Over-voltage



Over-current



Over-load



Battery failure

Feature

Small size, New Technology

Intelligent over-power use, through intelligent buck drive, can over-power use, load 2000-4000W appliances

Environmental Friendly

Not only will this allow you to make a contribution to the environment by harnessing clean and free solar energy, but it will help cut down your electricity bill all year long!

Lithium-ion Battery Safe vet Durable

G600/G2000 LFP can retain 80% of its original capacity at 3500 complete charge cycles.

G1000 PRO/G2000/G3000 can retain 80% of its original capacity at 1000 complete charge cycles.

All-Around Capability

It can be widely used in the field of mobile working, outdoor recreation, camping, rescuing, environment protection, emergency communication, power outage backup and so on

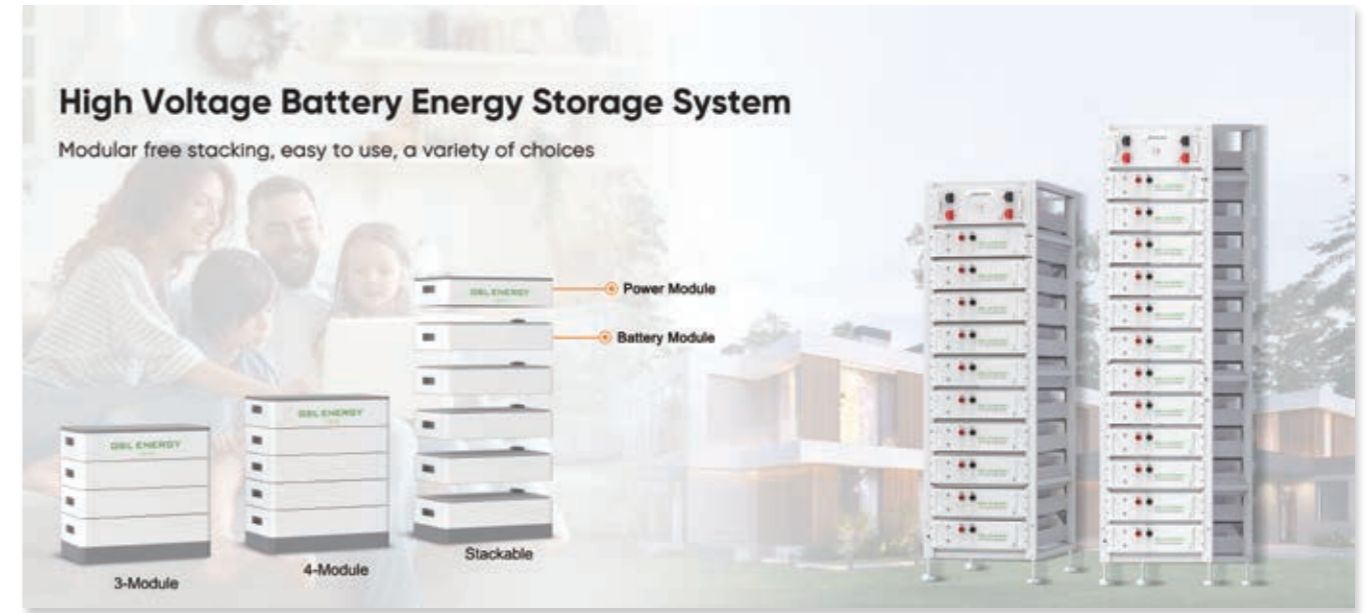


Model	G600 LFP	G1000 PRO	G1500 PRO	G2000	G2000 LFP	G3000
Rated Power	1200W	2000W	2000W	2200W	2200W	2200W
Peak Power	2000W		4000W		4000W (10MS)	
Capacity	614Wh	1000Wh	1450Wh	1865Wh	1920Wh	3108Wh
AC Input	120V/60Hz Pure Sine Wave		100V/120Hz Pure Sine Wave		120V/60Hz Pure Sine Wave	
PV Input	Voc 12V ~ 18V/100W Max/7A Max. Voc 32V ~ 95V/400W Max/15A Max		Voc 12V ~ 18V/100W Max/7A Max. Voc 32V ~ 95V/400W Max/15A Max		Voc 12V ~ 18V/100W Max/7A Max. 2 x Voc 32V ~ 95V/600W Max/15A Max	
Battery Type (80%EOL)	LiFePo4 Battery 3500 cycles	Lithium-ion Battery 1000 cycles	Lithium-ion Battery 1000 cycles		LiFePo4 Battery 3500 cycles	Lithium-ion Battery 1000 cycles
DC Output	12V		12V		12V	
Car Input	DC 12 ~ 18V--100W (Max)		DC 12 ~ 18V--100W (Max)		DC 12 ~ 18V--100W (Max)	
Dimension (L*W*H)	298*199*215mm / 11.7*7.8*8.5 in		377*238*270mm / 14.8*9.4*10.6 in		409*256*298mm / 16.1*10*11.6 in	
Weight	9.4kgs / 20 lbs	9.1kgs / 20 lbs	16Kgs / 20lbs		22kgs / 48.5 lbs	25kgs / 55 lbs

Compatible List of Inverters Brands

40~60VDC

100~1500VDC



- | | | | | |
|--------------------|-----------|-----------------|---------------|-----------|
| | | | | |
| Deye | Solis | Growatt | Afore | GoodWe |
| | | | | |
| Sinexcel | Megarevo | Hoymiles | INVT | Sunsynk |
| | | | | |
| SRNE | AiSWEI | Lux Power Tek | Sofar Solar | Solax |
| | | | | |
| Schneider Electric | SMA | Victron Energy | OutBack POWER | SMK SOLAR |
| | | | | |
| ZLPOWER | Sumry | Voltronic Solar | MUST | TBB |
| | | | | |
| SOROTEC | Sac Solar | | | |

- | | | | | |
|---------------|-------------|----------|---------|------------|
| | | | | |
| Deye | Solis | Growatt | GoodWe | INVT |
| | | | | |
| Lux Power Tek | Hoymiles | Megarevo | Sunsynk | Sinexcel |
| | | | | |
| SOLINTEG | SINY ENERGY | KOYOE | GSSTES | KEHUA TECH |
| | | | | |
| SINENG | AiSWEI | Hopewind | sunways | SERMATEC |
| | | | | |
| Elecod | | | | |

Case Studies

With more than 13 years of experience in the solar industry, GSL ENERGY has provided high quality products and solutions to more than 138+ countries around the world at competitive price along with comprehensive service. Till 2024, we have more than 500,000 families installed world wide. Here are some typical installations.



-Mexican
3.72MWh Liquid Cooling BESS



-Tibet, China
5MWh Hybrid Solar Storage System



-Zhejiang, China
3MWh Hybrid Solar Storage System



-Shandong, China
10MWh Hybrid Solar Storage System

Commercial&Industrial ESS



-Switzerland
HV 320kWh Solar Energy System



-USA
3.72MWh Liquid Cooling BESS



-Gansu, China
12MWh Hybrid Solar Storage System



-Indonesia
118MWh Hybrid Solar Storage System



-Indonesia
55MWh Hybrid Solar Storage System



-Africa
Hybrid Solar Storage System



-U.S.
200MWh Hybrid Solar Storage System



-Germany, France, Spain
Hybrid Solar Storage System

European



-Switzerland
50kWh Solar Energy System



-Germany
10kWh Hybrid Solar Storage System



-Germany
25kWh Hybrid Solar Storage System



-United Kingdom
20kWh Hybrid Solar Storage System



-United Kingdom
30kWh Hybrid Solar Storage System



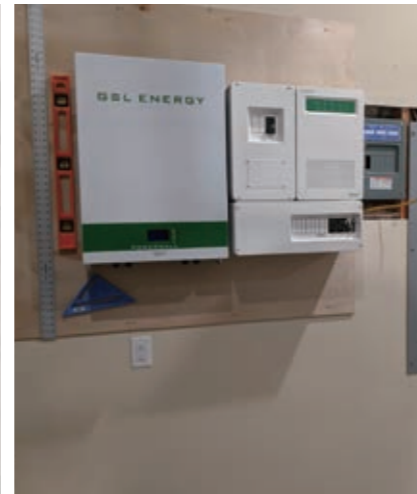
-United Kingdom
30kWh Hybrid Solar Storage System



-Germany
10kWh Solar Energy System



-Germany
40kWh Hybrid Solar Storage System



-Germany
5kWh Hybrid Solar Storage System



-United Kingdom
20kWh Hybrid Solar Storage System



-United Kingdom
20kWh Hybrid Solar Storage System



-United Kingdom
10kWh Hybrid Solar Storage System



-Germany
20kWh Solar Energy System



-Germany
100kWh Hybrid Solar Storage System



-Germany
10kWh Hybrid Solar Storage System



-Poland
30kWh Hybrid Solar Storage System



-Poland
10kWh Hybrid Solar Storage System



-Poland
30kWh Hybrid Solar Storage System



-Netherlands
80kWh Hybrid Solar Storage System

America



-Dominican
120kWh Hybrid Solar Storage System



-Panama
50kWh Hybrid Solar Storage System



-Panama
50kWh Hybrid Solar Storage System



-Jamaica
100kWh Hybrid Solar Storage System



-Jamaica
20kWh Hybrid Solar Storage System



-Jamaica
40kWh Hybrid Solar Storage System



-USA
60kWh Hybrid Solar Storage System



-USA
43kWh Hybrid Solar Storage System



-USA
20kWh Hybrid Solar Storage System



-Jamaica
40kWh Hybrid Solar Storage System



-Jamaica
20kWh Hybrid Solar Storage System



-Puerto Rico
30kWh Hybrid Solar Storage System



-USA
288kWh Hybrid Solar Storage System



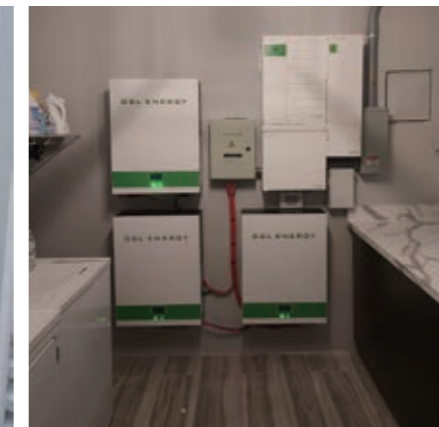
-USA
20kWh Hybrid Solar Storage System



-USA
20kWh Hybrid Solar Storage System



-Puerto Rico
10kWh Hybrid Solar Storage System



-Puerto Rico
30kWh Hybrid Solar Storage System



-Puerto Rico
14.34kWh Hybrid Solar Storage System



-USA
143.4kWh Hybrid Solar Storage System



-USA
143.4kWh Hybrid Solar Storage System



-USA
60kWh Hybrid Solar Storage System



-Puerto Rico
143.4kWh Hybrid Solar Storage System



-Panama
30kWh Hybrid Solar Storage System



-Panama
40kWh Hybrid Solar Storage System

Asia



-Lebanon
140kWh Hybrid Solar Storage System



-Lebanon
20kWh Hybrid Solar Storage System



-Lebanon
40kWh Hybrid Solar Storage System



-Thailand
100kWh Hybrid Solar Storage System



-Thailand
20kWh Hybrid Solar Storage System



-Thailand
40kWh Hybrid Solar Storage System



-Lebanon
60kWh Hybrid Solar Storage System



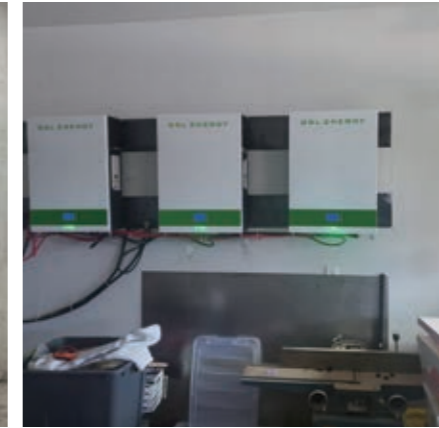
-Lebanon
40kWh Hybrid Solar Storage System



-Lebanon
20kWh Hybrid Solar Storage System



-Malaysia
20kWh Hybrid Solar Storage System



-Malaysia
15kWh Hybrid Solar Storage System



-Malaysia
20kWh Hybrid Solar Storage System



-Lebanon
40kWh Hybrid Solar Storage System



-Lebanon
40kWh Hybrid Solar Storage System



-Lebanon
20kWh Hybrid Solar Storage System



-Philippines
20kWh Hybrid Solar Storage System



-Philippines
25kWh Hybrid Solar Storage System



-Philippines
14.34kWh Hybrid Solar Storage System



-Lebanon
40kWh Hybrid Solar Storage System



-Thailand
40kWh Hybrid Solar Storage System



-Thailand
20kWh Hybrid Solar Storage System



-Philippines
10kWh Hybrid Solar Storage System



-Philippines
20kWh Hybrid Solar Storage System



-Japan
40kWh Hybrid Solar Storage System



-Nigeria
40kWh Hybrid Solar Storage System



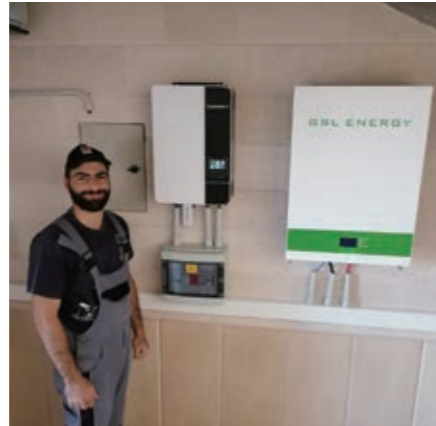
-Nigeria
60kWh Hybrid Solar Storage System



-Nigeria
80kWh Hybrid Solar Storage System



-South Africa
20kWh Hybrid Solar Storage System



-South Africa
10kWh Hybrid Solar Storage System



-South Africa
10kWh Hybrid Solar Storage System



-Kenya
5kWh Hybrid Solar Storage System



-Kenya
30kWh Hybrid Solar Storage System



-Kenya
10kWh Hybrid Solar Storage System



-Cameroon
30kWh Hybrid Solar Storage System



-Cameroon
10kWh Hybrid Solar Storage System



-Congo
10kWh Hybrid Solar Storage System

Comprehensive Services

One-stop Professional Solar Solutions



Full Certificates



120,000+
Solar Projects



7/24
Professional Service



Fast Delivery

